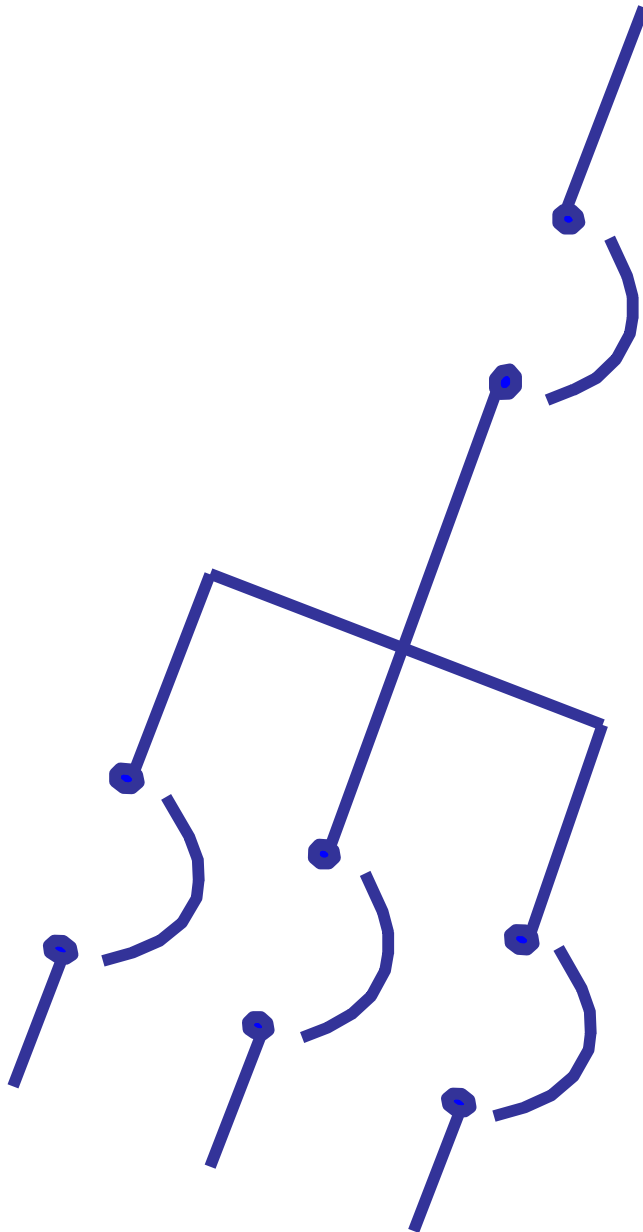


# SERIES RATED COMBINATION

# Guide



**Siemens Canada Limited**

Automation & Infrastructure Solutions  
80 Walker Drive  
Brampton, Ontario  
L6T 4H6  
Tel: 1 800 816 3478 [www.siemens.ca](http://www.siemens.ca)

**SIEMENS**

The global network of innovation

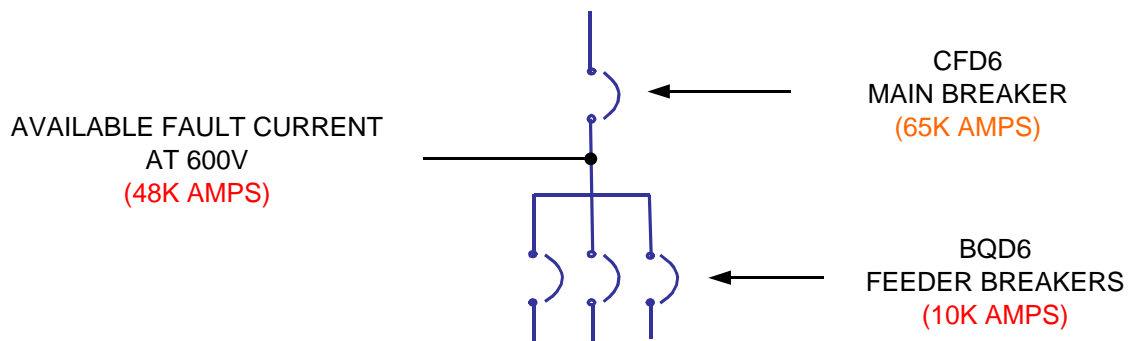
## Introduction

The short circuit protection devices of most common electrical distribution systems have interrupting ratings higher than the respective available fault current. These are known as Fully Rated systems. Fully rated protection devices are essential for main or upstream but not essential for branch or downstream devices if the main and branch devices have been tested and approved as series rated. In instances of a short circuit in a series rated combination, on the load side of the downstream device, the fully rated upstream device will assist in clearing the fault.

Short circuit devices with higher interrupting ratings are generally more costly than lower rated devices. Installing Series Rated systems can be economical without compromising system reliability or safety.

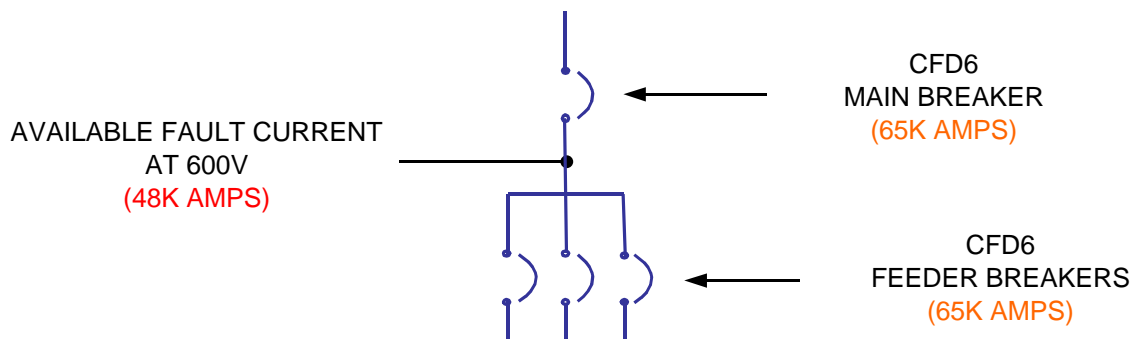
## Definition of a Series Rated System

Series rated systems (fig,1) have at least two tested and certified series connection devices. In the event of a short circuit, on the load side of the lower interrupting rated downstream device, both devices will operate simultaneously to clear the fault.



## Definition of a Fully Rated System

Fully rated systems (fig.2) have protection devices tested to withstand the fault current available at their respective applied location.



## Standards Guiding Series Rated combinations

Canadian standards governing testing of SERIES RATED combinations are: CSA C22.2 No. 29-M1989, C22.2 No. 5-M1989, C22.2 No. 31-M89. The Canadian Electrical Code rules are covered under sections 14-012, *Ratings of Protective and Control Equipment* and 14-014, *Series rated combinations*.

## Labeling of equipment containing Series Rated protective devices

A Series Rated system requires appropriate caution labeling indicating that approved series tested devices are the only acceptable replacement.

## Reading the Series Rated combination tables

Identify the application voltage.

Identify the available short circuit current at the point where the breaker is to be applied.

Identify the ampere rating and number of poles for both the upstream and downstream breakers.

### Example:

The application voltage is 208V, 3phase, the available short circuit current is 19,000 Amps. The Main breaker is 200A rated and the Branch breaker is 3 Pole, 100A rated.

From the tables select the voltage greater than and closest to the application voltage. ( 240 )

From the IC column select the current rating greater than and closest to the application short circuit current. ( 22 )

From the Main Breaker column select the type based on the required ampere rating and number of poles. ( QJH2, 200A, 3P ) The Maximum current tested for this type of breaker is 225A.

From the Branch Breaker column select the type based on the required ampere rating and number of poles. In some cases more than one option may be available. ( QP, BQ, BL )

IC/CI KA	Main Breaker / Disjoncteur principal		Branch Breaker / Disjoncteur de branchement			Max Voltage (AC/CA)			
	Type	Ams (Poles)	Type	# Poles	Amps				
22	QJH2	60 - 225 (2 & 3)	QP, BQ, BL	1	15 - 70	120/240			
				2	15 - 125	240			
				3	60 - 100	240			
						QPF, BQF BLF, QE, BE, BLE	1	15 - 30	120
						QT	1, 2	15, 20, 40	120/240

This information is of a general nature and is intended for reference purposes only. Although every effort to ensure correctness of the material, Siemens Canada Limited cannot assume any responsibility for actions taken on the basis of the content herein.

Diagram for the above example:

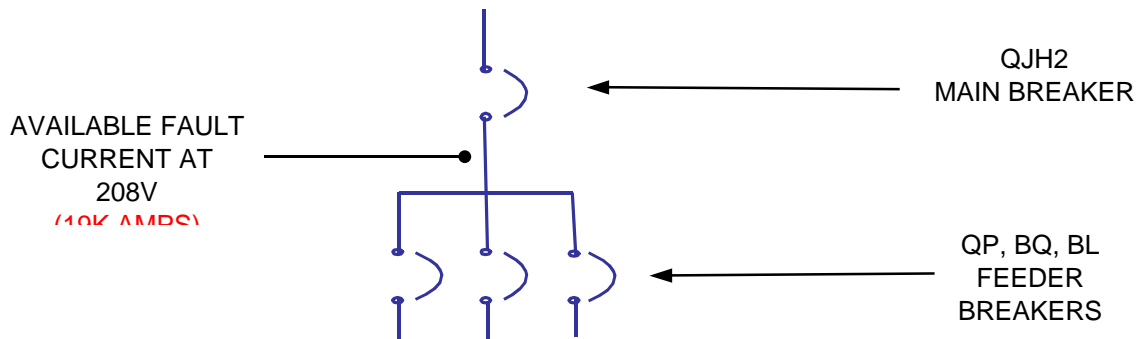


Figure 3

IC/CI KA	Main Breaker / Disjoncteur principal		Branch Breaker / Disjoncteur de branchement			Max Voltage (AC/CA)
	Type	Ams (Poles)	Type	# Poles	Amps	
22	QPH, BQH, BLH	15-70 (1), 15-125 (2), 15-100 (3)	QP, BQ, BL	1	15 - 70	120/240
				2	15 - 125	120/240
				3	15-100	240
			QE, BLE, QPF, BLF	1	15 - 60	120/240
			QE, BLE, QPF, BQF, BLF	2	15 - 30	120
			QT	1, 2	15, 20, 40	120/240
22	QPPH	125 - 225 (2)	QP, BQ, BL	1	15 - 70	120/240
				2	15 - 125	120/240
			QE, BLE, BE, QPF, BQF, BLF	1	15 - 30	120
			QE, BLE, BE, QPF, BLF	2	15 - 60	120/240
			QPP	2	125 - 200	120/240
			QT	1, 2	15, 20, 40	120/240
22	QJH2	60 - 225 (2 & 3)	QP, BQ, BL	1	15 - 70	120/240
				2	15 - 125	240
				3	60 - 100	240
			QPF, BQF BLF, QE, BE, BLE	1	15 - 30	120
			QT	1, 2	15, 20, 40	120/240
42	QJ2H	60 - 225 (2 & 3)	QP, BQ, BL	1	15 - 70	120/240
				2	15 - 125	120/240
				3	60 - 100	240
			QPH, BQH, BLH	1	15 - 70	120/240
				2	15 - 125	120/240
				3	15 - 100	240
			QE, BLE, BE, QPF, BLF	2	15 - 60	120/240
QJH2	2, 3	60 - 225	240			
65	HQP, HBQ, HBL	15-70 (1), 15-125 (2), 15-100 (3)	QP, BQ, BL, QPH, BQH, BLH	1	15 - 70	120/240
				2	15 - 100	120/240
				3	15 - 100	240
			QPF, BQF, BLF, BE, QFHF, BQHF, BLHF, QEH, BLEH, QE, BLE	1	15 - 30	120
			QEH, BLEH, QE, QPHF, BLHF, BLE, QPF, BLF	2	15 - 60	120/240
			QT	1, 2	15 - 40	120/240
65	HQPP	125 - 225 (2)	QP, BQ, BL, QPH, BQH, BLH	1	15 - 70	120/240
				2	15 - 125	120/240
			QPF, BQF, BLF, QPHF, BQHF, BLHF, QEH, BLEH, QE, BLE, BE	1	15 - 30	120
			QEH, BLEH, QE, QPHF, BLHF, BLE, QPF, BLF	2	15 - 60	120/240
			QT	1, 2	15 - 40	120
			QPPH, QPP	2	125 - 200	120/240
65	ED4, ED6	15 - 100 (1), 15 - 125 (2 & 3)	QP, BQ, BL, QPH, BQH, BLH	1	15 - 70	120
				2	15 - 125	120/240
				3	15 - 100	240
			QPHF, BQHF, BLHF, QPF, BQF, BLF, QE, QEH, BLEH, BE, BLE	1	15 - 30	120
			QEH, BLEH, QE, QPHF, BLHF, BLE, QPF, BLF	2	15 - 60	120/240
			ED2	1, 2, 3	15 - 100	120/240
			QT	1, 2	15 - 40	120/240
65	FD6-A, FXD6-A	70 - 250 (2 & 3)	QP, BQ, BL, QPH, BQH, BLH	1	15 - 70	120/240
				2	15 - 125	120/240
				3	15 - 100	240
			QJ2H, QJ2, QJH2	2, 3	60 - 225	240
			QPPH	2	125 - 225	120/240
65	JXD2-A, JD6-A, JXD6-A	200 - 400 (2 & 3)	QPH, BQH, BLH	1	15 - 70	120/240
				2	15 - 125	120/240
				3	15 - 100	240
			QJ2H, QJH2	2, 3	60 - 225	240
65	LD6-A	200 - 600 (2 & 3)	QPH, BQH, BLH	1	15 - 70	120/240
				2	15 - 125	120/240
				3	15 - 100	240
			QJ2H, QJH2	2, 3	60 - 225	240
65	LXD6-A	450 - 600 (2 & 3)	QPH, BQH, BLH	1	15 - 70	120/240
				2	15 - 125	120/240
				3	15 - 100	240
			QJ2H, QJH2	2, 3	60 - 225	240

IC/CI KA	Main Breaker / Disjoncteur principal		Branch Breaker / Disjoncteur de branchement			Max Voltage (AC/CA)
	Type	Ams (Poles)	Type	# Poles	Amps	
65	HJD6-A, HJXD6-A, HLD6-A, HLXD6-A, HMD6, HMXD6, HND6, HNXD6, HPD6, HPXD6, HRD6, HRXD6	200 - 2000 (2 & 3)	QPH	1	15 - 70	120/240
				2	15 - 125	120/240
				3	15 - 100	240
65	SJD6-A, SLD6-A, SMD6, SND6, SPD6	200 - 1600 (2 & 3)	QPH, BQH, BLH	1	15 - 70	120/240
				2	15 - 125	120/240
				3	15 - 100	240
	MD6, MXD6, ND6, NXD6, PD6, PXD6, RD6, RXD6	500 - 2000 (2 & 3)	QPH, BQH, BLH	1	15 - 70	120/240
				2	15 - 125	120/240
3	15 - 100	240				
100	HED4	15 - 100 (1)	ED2, ED4	1	15 - 100	120
100	HED4, HED6	15 - 125 (2 & 3)	QP, BQ, BL, QPH, BQH, BLH, HQP, HBQ, HBL	1	15 - 70	120
				2	15 - 125	120/240
				3	15 - 100	240
			QE, BLEH, QE, BE, QPHF, BQHF, BLHF, QPF, BLF, BQF, BLE	1	15 - 30	120
				2	15 - 60	120/240
			ED2	1, 2, 3	15 - 100	120/240
			ED4	1	15 - 100	120
			ED4, ED6	2, 3	15 - 125	240
QT	1, 2	15 - 40	120/240			
100	HED4	15 - 100 (1)	ED2, ED4	1	15 - 100	120
100	HQPPH	125 - 225 (2)	QP, BQ, BL, QPH, BQH, BLH, HQP, HBQ, HBL	1	15 - 70	120/240
				2	15 - 125	120/240
			HQPP, QPPH, QPP	2	125 - 225	120/240
			QE, BLEH, QE, BE, QPHF, BQHF, BLHF, QPF, BQF, BLF, BLE	1	15 - 30	120
			QT	1, 2	15 - 40	120/240
100	HQJ2H	60 - 225 (2 & 3)	QP, BQ, BL	1	15 - 25	120/240
					35 - 70	120/240
				2	15 - 25	120/240
				35 - 125	120/240	
			3	15 - 100	240	
			QPH, BQH, BLH, HQP, HBQ, HBL	1	15 - 70	120/240
				2	15 - 125	120/240
			3	15 - 100	240	
			QE, BLEH, QE, BE, QPHF, BQHF, BLHF, QPF, BQF, BLF, BLE	1	15 - 30	120
			QE, BLEH, QPHF, BLHF, QE, BLE, QPF, BLF	2	15 - 60	120/240
QT	1	15 - 50	120/240			
100	HFD6, HFXD6	70 - 250 (2 & 3)	QP, BQ, BL, QPH, BQH, BLH, HQP, HBQ, HBL	1	15 - 70	120/240
				2	15 - 125	120/240
				3	15 - 100	240
			QE, BE, BLE, QPHF, BQHF, BLHF, QPF, BQF, BLF, QE, BLEH	1	15 - 30	120
			QPF, BLF, QE, BLE, QPHF, BLHF, QE, BLEH	2	15 - 60	120
			ED4	1	15 - 100	120
			ED4, ED6	2, 3	15 - 125	240
			FD6-A, FXD6-A	2, 3	70 - 250	240
			QJ2, QJH2, QJ2H	2, 3	60 - 225	240
			HQPP, QPPH, QPP	2	125 - 225	120/240
			QT	1, 2	15 - 30	120/240
			100	HJD6-A, HJXD6-A, SHJD6-A	200 - 400 (2 & 3)	ED4
ED4, ED6	2, 3	15 - 125				120/240
FD6-A, FXD6-A	2, 3	70 - 250				120/240
JD6-A, JXD6-A, JXD2-A, SJD6-A	2, 3	200 - 400				120/240
100	HLD6-A	200 - 600 (2 & 3)	ED4	1	15 - 100	120
			ED4, ED6	2, 3	15 - 125	240
			FD6-A, FXD6-A	2, 3	70 - 250	240
			JD6-A, JXD6-A, JXD2-A, SJD6-A	2, 3	200 - 400	240

IC/CI KA	Main Breaker / Disjoncteur principal		Branch Breaker / Disjoncteur de branchement			Max Voltage (AC/CA)
	Type	Ams (Poles)	Type	# Poles	Amps	
100	HLD6-A	200 - 600 (2 & 3)	LD6-A	2, 3	200 - 600	240
			LXD6-A	2, 3	450 - 600	240
			SLD6-A	3	300 - 600	240
100	HLXD6-A	450 - 600 (2 & 3)	ED4	1	15 - 100	120
			ED4, ED6	2, 3	15 - 125	240
			FD6-A, FXD6-A	2, 3	70 - 250	240
			JD6-A, JXD6-A, JXD2-A, SJD6-A	2, 3	200 - 400	240
			LD6-A	2, 3	200 - 600	240
			LXD6-A	2, 3	450 - 600	240
			SLD6-A	3	300 - 600	240
100	SHLD6-A	300 - 600 (3)	ED4	1	15 - 100	120
			ED4, ED6	2, 3	15 - 125	240
			FD6-A, FXD6-A	2, 3	70 - 250	240
			JD6-A, JXD6-A, JXD2-A, SJD6-A	2, 3	200 - 400	240
			LD6-A	2, 3	200 - 600	240
			LXD6-A	2, 3	450 - 600	240
			SLD6-A	3	300 - 600	240
100	HMD6, HMXD6	500 - 800 (2 & 3)	ED4	1	15 - 100	120
			ED4, ED6	2, 3	15 - 125	240
			FD6-A, FXD6-A	2, 3	70 - 250	240
			JD6-A, JXD6-A, JXD2-A, SJD6-A	2, 3	200 - 400	240
			LD6-A	2, 3	200 - 600	240
			LXD6-A	2, 3	450 - 600	240
			SLD6-A	3	300 - 600	240
			MD6, MXD6, SMD6	2, 3	500 - 800	240
100	SHMD6	500 - 800 (3)	ED4	1	15 - 100	120
			ED4, ED6	2, 3	15 - 125	240
			FD6-A, FXD6-A	2, 3	70 - 250	240
			JD6-A, JXD6-A, JXD2-A, SJD6-A	2, 3	200 - 400	240
			LD6-A	2, 3	200 - 600	240
			LXD6-A	2, 3	450 - 600	240
			SLD6-A	3	300 - 600	240
			MD6, MXD6, SMD6	2, 3	500 - 800	240
100	HND6, HNXD6	500 - 1200 (2 & 3)	FD6-A, FXD6-A	2, 3	70 - 250	240
			JD6-A, JXD6-A, JXD2-A, SJD6-A	2, 3	200 - 400	240
			LD6-A	2, 3	200 - 600	240
			LXD6-A	2, 3	450 - 600	240
			SLD6-A	3	300 - 600	240
			MD6, MXD6, SMD6	2, 3	500 - 600	240
100	SHND6	500 - 1200 (2 & 3)	ND6, NXD6, SND6	2, 3	500 - 1200	240
			ED4	1	15 - 100	120
			ED4, ED6	2, 3	15 - 125	240
			FD6-A, FXD6-A	2, 3	70 - 250	240
			JD6-A, JXD6-A, JXD2-A, SJD6-A	2, 3	200 - 400	240
			LD6-A	2, 3	200 - 600	240
			LXD6-A	2, 3	450 - 600	240
			SLD6-A	3	300 - 600	240
			MD6, MXD6, SMD6	2, 3	500 - 600	240
100	HPD6, HPXD6, SHPD	1200 - 1600 (3)	ND6, NXD6, SND6	2, 3	500 - 1200	240
			ED4	1	15 - 100	120
			ED4, ED6	2, 3	15 - 125	240
			FD6-A, FXD6-A	2, 3	70 - 250	240
			JD6-A, JXD6-A, JXD2-A, SJD6-A	2, 3	200 - 400	240
			LD6-A	2, 3	200 - 600	240
			LXD6-A	2, 3	450 - 600	240
			SLD6-A	3	300 - 600	240
100	HPD6, HPXD6, SHPD	1200 - 1600 (3)	MD6, MXD6, SMD6	2, 3	500 - 800	240
			PD6, PXD6, SPD6	2, 3	1200 - 1600	240

IC/CI KA	Main Breaker / Disjoncteur principal		Branch Breaker / Disjoncteur de branchement			Max Voltage (AC/CA)
	Type	Ams (Poles)	Type	# Poles	Amps	
100	HRD6, HRXD6	1600 - 2000 (3)	ED4	1	15 - 100	120
			ED4, ED6	2, 3	15 - 125	240
			FD6-A, FXD6-A	2, 3	70 - 250	240
			JD6-A, JXD6-A, JXD2-A, SJD6-A	2, 3	200 - 400	240
			LD6-A	2, 3	200 - 600	240
			LXD6-A	2, 3	450 - 600	240
			SLD6-A	3	300 - 600	240
			MD6, MXD6, SMD6	2, 3	500 - 800	240
			ND6, NXD6, SND6	2, 3	500 - 1200	240
			PD6, PXD6, SPD6	2, 3	1200 - 1600	240
RD6, RXD6	2, 3	1600 - 2000	240			
200	CED6	15 - 125 (2 & 3)	QP, BQ, BL, QPH, BQH, BLH, HQP, HBQ, HBL	1	15 - 70	120/240
				2	15 - 125	120/240
				3	15 - 100	240
			QPHF, BQHF, BLHF, QPF, BQF, BLF, QEH, QE, BE, BLEH	1	15 - 30	120
			QEH, BLEH, QPHF, BLHF, QPF, BLF, QE, BLE	2	15 - 60	120/240
			ED4, HED4	1	15 - 100	120
			ED4, ED6, HED4, HED6	2, 3	15 - 125	240
			QT	1, 2	15 - 40	120/240
200	CFD6	70 - 250 (2 & 3)	QP, BQ, BL, QPH, BQH, BLH, HQP, HBQ, HBL	1	15 - 70	120/240
				2	15 - 125	120/240
				3	15 - 100	240
			QPHF, BQHF, BLHF, QE, BE, BLE, QPF, BQF, BLF, QEH, BLEH	1	15 - 30	120
			QPHF, BLHF, QE, BLE, QPF, BLF, QEH, BLEH	2	15 - 60	120/240
			ED2	1, 2, 3	15 - 100	120/240
			HED4, ED4	1	15 - 100	120
			ED4, ED6, HED4, HED6	2, 3	15 - 125	240
			FD6-A, FXD6-A, HFD6, HFXD6	2, 3	70 - 250	240
			QJ2H, QJH2, QJ2	2, 3	60 - 225	240
QPPH, QPP	2	125 - 225	120/240			
QT	1, 2	15 - 40	120/240			
200	HHJD6, HHJXD6, HHL6, HHLXD6	200 - 600 (2 & 3)	FD6-A, FXD6-A, HFD6, HFXD6	2, 3	70 - 250	240
200	CJD6	200 - 400 (2 & 3)	QPH, BQH, BLH, HQP, HBQ, HBL	2	100 - 125	120/240
				3	100	240
			ED4, ED6	2, 3	15 - 125	240
			FD6-A, FXD6-A, HFD6, HFXD6	2, 3	70 - 250	240
			JXD2-A, JD6-A, JXD6-A, HJD6-A, HJXD6-A	2, 3	200 - 400	240
			QT	1, 2	15 - 30	120/240
200	CLD6	450 - 600 (2 & 3)	QPH, BQH, BLH, HQP, HBQ, HBL	2	100 - 125	120/240
				3	100	240
			ED4, ED6	2, 3	15 - 25	120/240
			FD6-A, FXD6-A, HFD6, HFXD6	2, 3	70 - 250	240
			JXD2-A, JD6-A, JXD6-A, HJD6-A, HJXD6-A	2, 3	200 - 400	240
			LD6-A, HLD6-A	2, 3	200 - 600	240
			LXD6-A, HJXD6-A	2, 3	450 - 600	240
QT	1, 2	15 - 30	120/240			
200	CMD6	500 - 800 (2 & 3)	ED4, ED6, HED4, HED6	2, 3	15 - 125	240
			FD6-A, FXD6-A, HFD6, HFXD6	2, 3	70 - 250	240
			JXD2-A, JD6-A, JXD6-A, HJD6-A, HJXD6-A	2, 3	200 - 400	240
			LD6-A, HLD6-A	2, 3	200 - 600	240
			LXD6-A, HLXD6-A	2, 3	450 - 600	240
			MD6, MXD6, HMD6, HMXD6	2, 3	500 - 800	240
200	SCMD6	500 - 800 (3)	MD6, MXD6, HMD6, HMXD6	2, 3	500 - 800	240
200	CND6	900 - 1200 (2 & 3)	ED4, ED6, HED4, HED6	2, 3	15 - 125	240
			FD6-A, FXD6-A, HFD6, HFXD6	2, 3	70 - 250	240
			JXD2-A, JD6-A, JXD6-A, HJD6-A, HJXD6-A	2, 3	200 - 400	240
200	CND6	900 - 1200 (2 & 3)	LD6-A, HLD6-A	2, 3	200 - 600	240
			LXD6-A, HLXD6-A	2, 3	450 - 600	240
			MD6, MXD6, HMD6, HMXD6	2, 3	500 - 800	240
			ND6, NXD6, SND6, HND6, HNXD6	2, 3	500 - 1200	240

IC/CI KA	Main Breaker / Disjoncteur principal		Branch Breaker / Disjoncteur de branchement			Max Voltage (AC/CA)
	Type	Ams (Poles)	Type	# Poles	Amps	
200	SCND6	900 - 1200 (3)	MD6, HMD6, HMXD6, MXD6, SHMD6, SMD6	2, 3	500 - 800	240
			ND6, HND6, SHND6, NXD6, HNXD6, SND6	2, 3	500 - 1200	240
200	CPD6	1200 - 1600 (3)	FD6-A, FXD6-A, HFD6, HFXD6	2, 3	70 - 250	240
			JXD2-A, JD6-A, JXD6-A, HJD6-A, HJXD6-A	2, 3	200 - 400	240
			LD6-A, HLD6-A	2, 3	200 - 600	240
			LXD6-A, HLXD6-A	2, 3	450 - 600	240
			MD6, MXD6, HMD6, HMXD6	2, 3	500 - 800	240
			ND6, NXD6, SND6, HND6, HNXD6	2, 3	500 - 1200	240
65	J, R	15 - 600 (1, 2, 3)	QPH, BQH, BLH	1	15-70	120/240
				2	15-125	120/240
				3	15 - 100	240
65	T	15 - 1200 (1, 2, 3)	QPH, BQH, BLH	1	15-70	120/240
				2	15-125	120/240
				3	15 - 100	240
65	L	601 - 6000 (1, 2, 3)	QPH, BQH, BLH	1	15-70	120/240
				2	15-125	120/240
				3	15 - 100	240
100	T (300 V)	15-200 (1, 2, 3)	QP, BQ, BL	1, 2, 3	15 - 125	120/240
			HQP, HBQ, HBL, QPH, BQH, BLH	3	15 - 100	240
			QPF, BQF, BLF, QE, BE, BLE, QEH, BLEH, BLHF, QPHF, BQHF,	1	15 - 30	120
			QEH, BLEH, QE, QPHF, BLHF, BLE, QPF, BLF	2	15 - 60	120/240
			QT	1, 2	15 - 50	120/240
		15 - 600 (1, 2, 3)	QPH, BQH, BLH, HQP, HBQ, HBL	1, 2	15 - 125	120/240
100	J, R	15 - 600 (2, 3)	ED4, HED4	1	15 - 100	120
			ED4, ED6, HED4, HED6	2, 3	15 - 125	240
		70 - 600 (2, 3)	FD6-A, FXD6-A	2, 3	70 - 250	240
			JD6-A, JXD6-A, JXD2-A, SJD6-A	2, 3	200 - 400	240
		200 - 600 (2, 3)	LD6-A	2, 3	200 - 600	240
300 - 600 (3)	SLD6-A	3	300 - 600	240		
450 - 600 (2, 3)	LXD6-A	2, 3	450 - 600	240		
100	T	15 - 1200 (2, 3)	ED4, HED4	1	15 - 100	120/240
			ED4, ED6, HED4, HED6	2, 3	15 - 125	240
		70 - 1200 (2, 3)	FXD6-A, FD6-A	2, 3	70 - 250	240
			LXD6-A	2, 3	450 - 600	240
		200 - 1200 (2, 3)	JD6-A, JXD6-A, JXD2-A, SJD6-A	2, 3	200 - 400	240
			LD6-A	2, 3	200 - 600	240
300 - 1200 (3)	SLD6-A	3	300 - 600	240		
100	L	601 - 6000 (2, 3)	ED4, HED4	1	15 - 100	120/240
			ED4, ED6, HED4, HED6	2, 3	15 - 125	240
			FD6-A, FXD6-A	2, 3	70 - 250	240
			JD6-A, JXD6-A, JXD2-A, SJD6-A	2, 3	200 - 400	240
			LD6-A	2, 3	200 - 600	240
			LXD6-A	2, 3	450 - 600	240
			SLD6-A	3	300 - 600	240
			SMD6	3	500 - 800	240
			SND6	3	500 - 1200	240
			PD6, PXD6, SPD6	3	1200 - 1600	240
RD6, RXD6	3	1600 - 2000	240			
200	R	125 - 200 (2, 3)	QJH2, QJ2H, QJ2	2, 3	125 - 200	240
200	T, J	125 - 600 (2, 3)	QJH2, QJ2H	2, 3	125 - 225	240
		125 - 400 (2, 3)	QJ2	2, 3	125 - 225	240
200	J, R	70 - 600 (2, 3)	HFD6, HFXD6	2, 3	70 - 250	240
200	T	70 - 1200 (2, 3)	HFD6, HFXD6	2, 3	70 - 250	240

IC/CI KA	Main Breaker / Disjoncteur principal		Branch Breaker / Disjoncteur de branchement			Max Voltage (AC/CA)
	Type	Ams (Poles)	Type	# Poles	Amps	
200	L	601 - 6000 (2, 3)	HFD6, HFXD6	2, 3	70 - 250	240
			MD6, MXD6, HMD6, HMXD6	2, 3	500 - 800	240
			ND6, NXD6, HND6, HNXD6	2, 3	500 - 1200	240
30	HED6	15 - 125 (2 & 3)	BQD, CQD	1, 2, 3	15 - 100	277
			ED4	1	15 - 100	277
			ED4, ED6	2, 3	15 - 125	480
35	JD6, JXD6	200-400 (2 & 3)	ED4	2,3	15-100	277
	LD6	200-600 (2 & 3)				277
	LXD6	450-600 (2 & 3)				277
42	HED4	15 - 125 (2 & 3)	BQD, CQD	1, 2, 3	15,100	277
			ED4	1	15 - 100	480
			ED4, ED6	2, 3	15 - 125	480
50	HJD6-A, HJXD6-A	200-400 (2 & 3)	HED4	2, 3	15 - 50	480
50	HLD6-A, HLXD6-A	200-600 (2 & 3)				
50	MD6, MXD6	500-800 (2 & 3)	FD6-A, FXD6-A	2, 3	70 - 250	480
			JD6-A, JXD6-A, SJD6-A	2, 3	200 - 400	480
			LD6-A	2, 3	200 - 600	480
			LXD6-A	2, 3	450 - 600	480
			SLD6-A	3	400 - 600	480
50	ND6, NXD6	500-1200 (2 & 3)	FD6-A, FXD6-A	2, 3	70 - 250	480
			JD6-A, JXD6-A,	2, 3	200 - 400	480
			LD6-A	2, 3	200 - 600	480
			LXD6-A	2, 3	450 - 600	480
			SJD6-A	3	200 - 400	480
			SLD6-A	3	400 - 600	480
50	SMD6	500 - 800 (3)	JD6-A, JXD6-A	2, 3	200 - 400	480
			LD6-A	2, 3	200 - 600	480
			LXD6-A	2, 3	450 - 600	480
			SJD6-A	3	200 - 400	480
			SLD6-A	3	400 - 600	480
50	SND6	500 - 1200 (3)	JD6-A, JXD6-A	2, 3	200 - 400	480
			LD6-A	2, 3	200 - 600	480
			LXD6-A	2, 3	450 - 600	480
			SJD6-A	3	200 - 400	480
			SLD6-A	3	400 - 600	480
50	SPD6	1200 - 1600 (3)	JD6-A, JXD6-A	2, 3	200 - 400	480
			LD6-A	2, 3	200 - 600	480
			LXD6-A	2, 3	450 - 600	480
			SJD6-A	3	200 - 400	480
			SLD6-A	3	400 - 600	480
50	PD6, PXD6	1400 - 1600 (3)	FD6-A, FXD6-A	2, 3	70 - 250	480
		1200 - 1600 (3)	JD6-A, JXD6-A, SJD6-A	2, 3	200 - 400	480
			LD6-A	2, 3	200 - 600	480
			LXD6-A	2, 3	450 - 600	480
			SJD6-A	3	200 - 400	480
			SLD6-A	3	400 - 600	480
50	RD6, RXD6	1800 - 2000 (3)	FD6-A, FXD6-A	2, 3	70 - 250	480
			JD6-A, JXD6-A, SJD6-A	2, 3	200 - 400	480
			LD6-A	2, 3	200 - 600	480
			LXD6-A	2, 3	450 - 600	480
			SJD6-A	3	200 - 400	480
			SLD6-A	3	400 - 600	480
65	HFD6, HFXD6	70 - 250 (2 & 3)	BQD, CQD	1, 2, 3	15 - 100	480
			ED4, HED4	1	15 - 100	277
			ED4, ED6, HED4, HED6	2, 3	15 - 125	480
65	HJD6-A, HJXD6-A	200 - 400 (2 & 3)	HED4, ED4	1	15 - 100	480
			FD6-A, FXD6-A	2, 3	70 - 250	480
			JD6-A, JXD6-A	2, 3	200 - 400	480

IC/CI KA	Main Breaker / Disjoncteur principal		Branch Breaker / Disjoncteur de branchement			Max Voltage (AC/CA)
	Type	Ams (Poles)	Type	# Poles	Amps	
65	HLD6-A	200 - 600 (2 & 3)	ED4, HED4	1	15 - 100	277
			FD6-A, FXD6-A	2, 3	70 - 250	480
			JD6-A, JXD6-A	2, 3	200 - 400	480
			LD6-A	2, 3	200 - 600	480
			LXD6-A	2, 3	450 - 600	480
65	HLXD6-A	450 - 600 (2 & 3)	ED4, HED4	1	15 - 100	277
			FD6-A, FXD6-A	2, 3	70 - 250	480
			JD6-A, JXD6-A	2, 3	200 - 400	480
			LD6-A	2, 3	200 - 600	480
			LXD6-A	2, 3	450 - 600	480
65	HMD6, HMXD6	500 - 800 (2 & 3)	FD6-A, FXD6-A	2, 3	70 - 250	480
			JD6-A, JXD6-A	2, 3	200 - 400	480
			LD6-A	2, 3	200 - 600	480
			LXD6-A	2, 3	450 - 600	480
65	HND6, HNXD6	500 - 1200 (2 & 3)	FD6-A, FXD6-A	2, 3	70 - 250	480
			JD6-A, JXD6-A	2, 3	200 - 400	480
			LD6-A	2, 3	200 - 600	480
			LXD6-A	2, 3	450 - 600	480
			MD6, MXD6, SMD6	2, 3	500 - 800	480
65	HRD6, HRXD6	1800 - 2000 (3)	FD6-A, FXD6-A	2, 3	70 - 250	480
			JD6-A, JXD6-A	2, 3	200 - 400	480
			LD6-A	2, 3	200 - 600	480
			LXD6-A	2, 3	450 - 600	480
100	HHJXD6, HHJD6, HHL6, HHLXD6	200 - 600 (2 & 3)	ED4, ED6, HED4, HED6	1	15 - 100	277
			FD6-A, FXD6-A, HFD6, HFXD6	2, 3	70 - 250	480
100	CMD6	500 - 800 (3)	FD6-A, FXD6-A, HFD6, HFXD6	2, 3	70 - 250	480
			JD6-A, HJD6-A, JXD6-A, HJXD6-A	2, 3	200 - 400	480
			LD6-A, HLD6-A	2, 3	200 - 600	480
			LXD6-A, HLXD6-A	2, 3	450 - 600	480
			MD6, MXD6, HMD6, HMXD6	2, 3	500 - 800	480
100	SCMD	500 - 800 (3)	HFXD6	2, 3	70 - 250	480
100	SCND6	900 - 1200 (3)	HFD6, HFXD6	2, 3	70 - 250	480
100	CND6	1200 (3)	FD6-A, FXD6-A, HFD6, HFXD6	2, 3	70 - 250	480
			JD6-A, JXD6-A, HJD6-A, HJXD6-A	2, 3	200 - 400	480
			LD6-A, HLD6-A	2, 3	200 - 600	480
			LXD6-A, HLXD6-A	2, 3	450 - 600	480
			MD6, MXD6, HMD6, HMXD6	2, 3	500 - 800	480
100	CPD6	1200 - 1600 (3)	ND6, NXD6, HND6, HNXD6	2, 3	500 - 1200	480
150	CJD6	200 - 400 (2 & 3)	FD6-A, FXD6-A, HFD6, HFXD6	2, 3	70 - 250	480
			ED4	1	15 - 100	277
150	CLD6	450 - 600 (2 & 3)	HFD6, HFXD6	2, 3	70 - 250	480
			JD6-A, HJD6-A, JXD6-A, HJXD6-A	2, 3	200 - 400	480
			LD6-A, HLD6-A	2, 3	200 - 600	480
			LXD6-A, HLXD6-A	2, 3	450 - 600	480
			BQD, CQD	1	15 - 100	480
200	CED6	15 - 125 (2 & 3)	2, 3	20 - 30	480	
			ED4, HED4	1	15 - 100	277
			ED4, ED6, HED4, HED6	2, 3	15 - 125	480
			BQD, CQD	1	15 - 100	480
200	CFD6	70 - 250 (2 & 3)	2, 3	20 - 30	480	
			ED4, ED6	2, 3	15 - 50	480
			ED4, HED4	1	15 - 100	277
			HED4, HED6	2, 3	15 - 125	480
			FD6-A, FXD6-A, HFD6, HFXD6	2, 3	70 - 250	480
			ED4	1	60 - 100	277
100	J	60 - 400 (1, 2, 3)	ED4	2, 3	15 - 100	480
100	J	15 - 400 (1, 2, 3)	ED4	1	15 - 50	277
100	T, J	70 - 600 (2, 3)	FD6-A, FXD6-A	2, 3	70 - 250	480
100	J, R	70 - 600 (2, 3)	HFD6, HFXD6	2, 3	70 - 250	480

IC/CI KA	Main Breaker / Disjoncteur principal		Branch Breaker / Disjoncteur de branchement			Max Voltage (AC/CA)	
	Type	Ams (Poles)	Type	# Poles	Amps		
100	T, J, R	200 - 600 (2, 3)	JD6-A, JXD6-A, HJD6-A, HJXD6-A	2, 3	200 - 400	480	
			LD6-A, HLD6-A, HLXD6-A	2, 3	200 - 600	480	
100	T	70 - 1200 (2, 3)	LXD6-A,	2, 3	450 - 600	480	
			HFD6, HFXD6	2, 3	70 - 250	480	
100	T, L	601 - 1200 (2, 3)	JD6-A, JXD6-A, HJD6-A, HJXD6-A	2, 3	200 - 400	480	
			LD6-A, HLD6-A	2, 3	200 - 600	480	
			LXD6-A, HLXD6-A	2, 3	450 - 600	480	
100	L	601 - 6000 (2, 3)	HFD6, HFXD6	2, 3	70 - 250	480	
			MD6, MXD6, HMD6, HMXD6	2, 3	500 - 800	480	
			ND6, NXD6, HND6, HNXD6	2, 3	500 - 1200	480	
			PD6, HPD6, HPXD6	3	1200 - 1600	480	
200	R	15 - 100 (1, 2, 3)	BQD, CQD	1	15 - 100	480	
				2, 3	20 - 30	480	
	T, J	15 - 200 (1, 2, 3)	BQD, CQD	1	15 - 100	480	
				2,3	20 - 30	480	
18	ED6, HED6	15 -125 (1, 2, 3)	BQD6,CQD6	1	15 - 70	347	
	ED6, HED6	15 -125 (2, 3)	BQD6,CQD6	2, 3	15 - 70	347/600	
25	HFD6	70 - 250 (2, 3)	BQD6, CQD6	1	15 - 70	347	
			BQD6, CQD6, ED6, HED6	2, 3	15 - 70	347/600	
			ED6, HED6	2, 3	15 - 125	347/600	
35	HJD6, HJXD6	200 - 400 (2, 3)	HFD6	2, 3	70 - 250	347/600	
	HLD6, HLXD6	450 - 600 (2, 3)					
50	HMD6, HMXD6 HND6 HNXD6	500 - 800 (2, 3) 500 - 1200 (2, 3) 900 - 1200 (2, 3)	HFD6	2, 3	70	600	
			JD6, JXD6		200 - 400	600	
			HJD6, HJXD6		200 - 400	600	
			LD6, HLD6		200 - 600	600	
			LXD6, HLXD6		450 - 600	600	
65	CFD6	70 - 250 (2, 3)	BQD6,CQD6	2, 3	15 - 70	347/600	
			ED6, HED6		15 - 125	600	
65	CMD6 CND6 CPD6	500 - 800 (2, 3) 900 - 1200 (2,3) 1200 - 1600 (2,3 )	HFD6	2, 3	70	600	
			JD6, JXD6		200 - 400	600	
			HJD6, HJXD6		200 - 400	600	
			LD6, HLD6		200 - 600	600	
			LXD6, HLXD6		450 - 600	600	
65	HPD6, HPXD6	1200 - 1600 (2, 3)	HFD6	2, 3	70	600	
			JD6, JXD6		200 - 400	600	
			HJD6, HJXD6		200 - 400	600	
			LD6, HLD6		200 - 600	600	
			LXD6, HLXD6		450 - 600	600	
100	CED6	15 - 125 (2, 3)	BQD6,CQD6	1	15 - 70	347	
				2	15 - 70	347/600	
				3	15 - 70	347/600	
100	CFD6	70 -250 (2, 3)	ED6, HED6	2, 3	15 - 125	600	
				BQD6,CQD6	1	15 - 70	347
				HFD6	2, 3	70 - 250	600
100	J,R,T	200 - 600 (2, 3)	JD6, JXD6	2, 3	200 - 400	600	
			HJD6, HJXD6		200 - 600	600	
			LD6, HLD6		450 - 600	600	
			LXD6, HLXD6				

2001.10.01

**Siemens Canada Limited**

Automation & Infrastructure Solutions

80 Walker Drive

Brampton, Ontario

L6T 4H6

Tel: 1 800 816 3478 [www.siemens.ca](http://www.siemens.ca)

**SIEMENS**

The global network of innovation

0.5\_10/01\_AIS\_1198