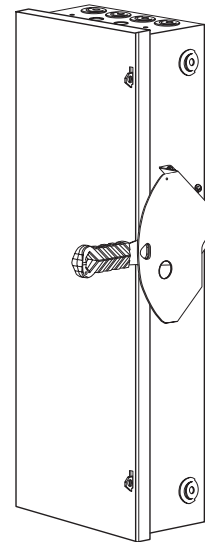


Product Specification Sheet #HD30.13.1

Heavy Duty Double Throw Safety Switches

Type VBII

30 Amp, Type 1 (Indoor)



General Information

Catalog Number	Max AC Volts	Description	Shipping Weight (lbs)
DTFC321 ^①	240	Fusible, 3 Pole, 3 Wire	38
DTFC361 ^①	600	Fusible, 3 Pole, 3 Wire	38
DTNFC221	240	Non-fusible, 2 Pole, 2 Wire	33
DTNFC321	240	Non-fusible, 3 Pole, 3 Wire	34
DTNFC361	600	Non-fusible, 3 Pole, 3 Wire	34

Horsepower Ratings ^②

Catalog Number	240V 1Ø		240V 3Ø		480V 3Ø		600V 3Ø		250V DC	
	Std	Max	Std	Max	Std	Max	Std	Max	Std	Max
DTFC321	1½	3	3	7½	—	—	—	—	5	—
DTFC361	1½	3	3	7½	5	15	7½	20	5	—
DTNFC221	—	5	—	10	—	—	—	—	—	5
DTNFC321	—	5	—	10	—	—	—	—	—	5
DTNFC361	—	5	—	10	—	20	—	30	—	5

Accessories

Catalog Number	Description
HA161234	Auxiliary Switch (1-NO & 1 NC) ^③
HA261234	Auxiliary Switch (2-NO & 2 NC) ^③
HA361234	Low Voltage Auxiliary Switch ^③
HG61234	Equipment Ground Lug Kit (two lugs provided)
HG261234	Isolated Equipment Ground Lug Kit
HP61	Fuse Puller (3 per kit, (2) kits required per switch)
HNC612	Neutral Kit
HR21	240 Volt Class R Fuse Clip Kit (3 fuse clips per kit, (2) kits required per switch)
HR612	600 Volt Class R Fuse Clip Kit (3 fuse clips per kit, (2) kits required per switch)
HLC612	Copper Lug Kit (9 lugs per kit) ^⑤
HCL612	Compression Lug Neutral Barrier Kit

Replacement Parts

Catalog Number	Description
HFB21	Fusible 240 Volt Line Side Replacement Base (2) kits required per switch
HBB21	Fusible 240 Volt Load Side Replacement Base (2) kits required per switch
HFB612	Fusible 600 Volt Line Side Replacement Base (2) kits required per switch
HBB612	Fusible 600 Volt Load Side Replacement Base (2) kits required per switch
HNB612	Non-fusible Replacement Line Base (2) Kits required per switch
HH61234	Replacement Handle/Handle Guard
HL612	Replacement Lugs (3 lugs per kit)
HM6123	Replacement Mechanism (2) kits required per switch
^④	Replacement Door

^① Fusible switches accept: Class H fuses as standard or Class R fuses with kit. Catalog number DTF361 also accepts Class J fuses (move load base).

^② Dual horse ratings

Std - applies when non-time delay fuses are installed.

Max - applies when time-delay fuses are installed.

^③ (2) required per switch (one for each of the two line bases).

^④ Catalog number is same as switch catalog number plus "DOOR" suffix.

^⑤ Lugs are aluminum alloy as standard. Optional copper body lugs are available.

Standards and Ratings

- CSA#1079316
- Meets CSA C22.2 NO.4-04 for switches
- Suitable for use as Transfer Equipment on optional standby systems as defined by Article 702 of the NEC
- Meets NEMA Standard KS-1 for enclosed switches (Type HD)
- Meets NEC wire bending space requirements
- Suitable for use as Service Equipment
- Rated 10,000 AIC with Class H or 200,000 AIC when used with or protected by Class R or J fuses (fuse ampere rating must not exceed switch ampere rating)

Features

- Quick-make and break switching action
- Visible blade, double break construction
- Highly visible ON/OFF indication
- Modular design allows quick and easy replacement of parts
- Front removable lugs which can easily be converted to copper body or compression type lugs
- Defeatable dual cover interlock
- All copper current carrying parts ^⑤
- Tangential knockouts
- Handle is padlockable in OFF position

Mechanical Lug Wire Ranges (60/75°C, Cu/Al)

Description	Wire Range
Line, Load Neutral	#12-6 AWG (Al) or #14-6 AWG (Cu)
Ground	#14-4 AWG

SIEMENS

Product Specification Sheet #HD30.13 (page 2)

Compression Lugs (UL listed for field installation) ①

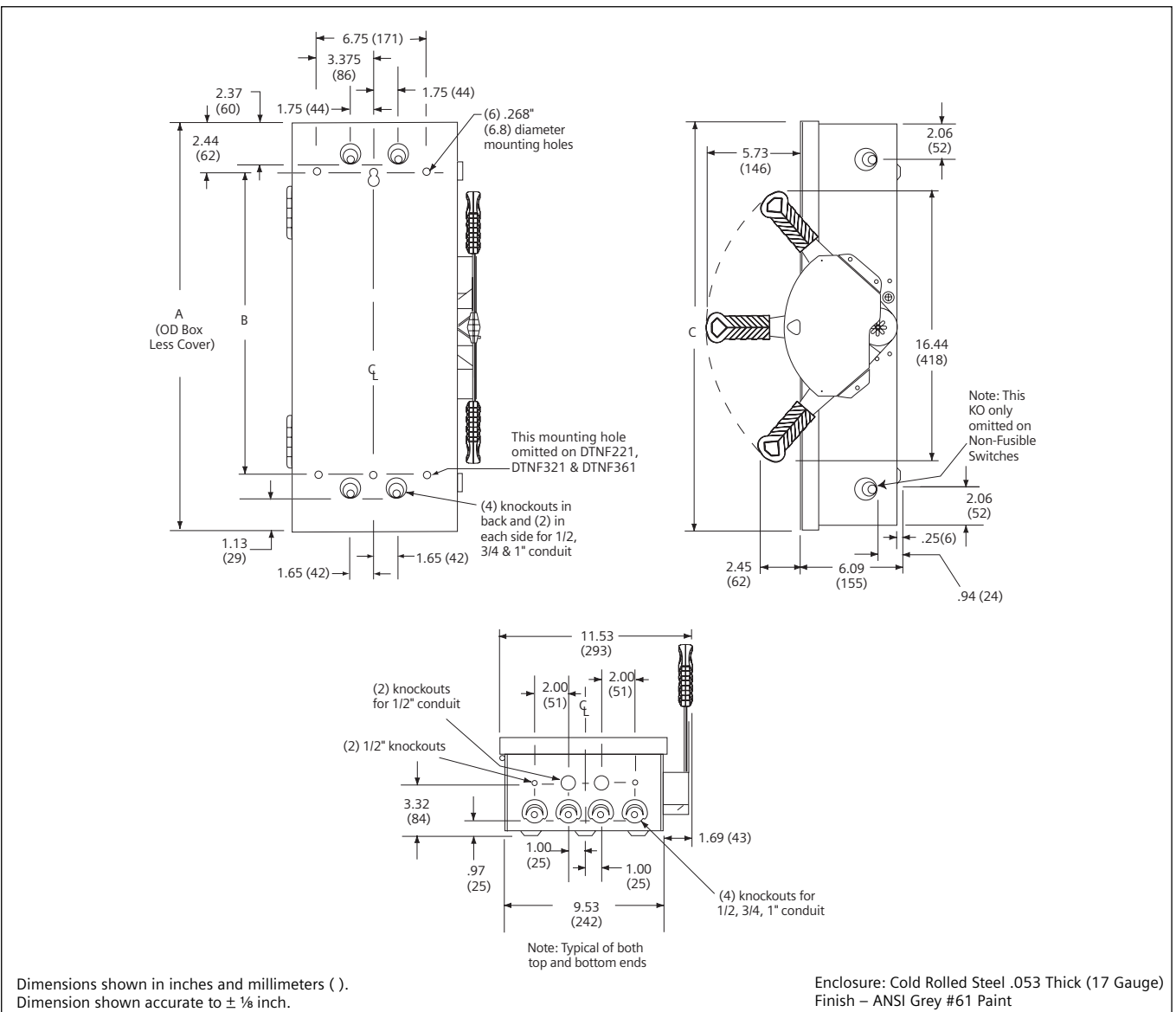
Wire Size	Burdny		Thomas-Betts		IlSCO	
	CU ONLY	CU/AL	CU ONLY	CU/AL	CU ONLY	CU/AL
#14-10				60096 60097		
#8	YA8C-L BOX YA8C-L1 BOX		54104 54130	60101 60102 61102	CRA-8	ACL-8 ACN-8
#6				61107		

Dimensions and Wire Bending Space

Catalog Number	Dimensions			Wire Bending Space	
	A	B	C	Top	Bottom
DTNFC221 DTNFC321 DTNFC361	24.50 (622)	19.00 (483)	24.98 (634)	4.75	4.75
DTFC321 DTFC361	29.14 (740)	23.50 (597)	29.63 (753)	4.75	7.50 4.75

① If compression lugs are used for the neutral, order compression lug neutral barrier kit HCL612.

Dimension Drawing



Siemens Canada Ltd.
Automation & Drives
1550 Appleby Line
Burlington, Ontario L7L 6X7

©Siemens Canada Ltd.
Siemens is a registered trademark of Siemens AG.
Specifications are subject to change without notice.

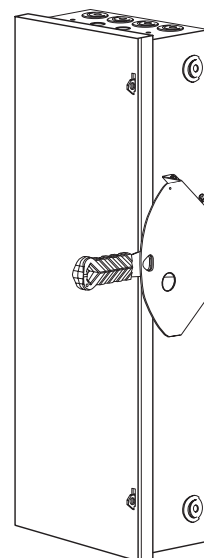
www.siemens.ca

Product Specification Sheet #HD60.13.1

Heavy Duty Double Throw Safety Switches

Type VBII

60 Amp, Type 1 (Indoor) Enclosure



General Information

Catalog Number	Max AC Volts	Description	Shipping Weight (lbs.)
DTFC322 ①	240	Fusible, 3 Pole, 3 Wire	43
DTFC362 ①	600	Fusible, 3 Pole, 3 Wire	43
DTNFC222	240	Non-fusible, 2 Pole, 2 Wire	35
DTNFC322	240	Non-fusible, 3 Pole, 3 Wire	36
DTNFC362	600	Non-fusible, 3 Pole, 3 Wire	36

Horsepower Ratings ②

Catalog Number	240V 1Ø		240V 3Ø		480V 3Ø		600V 3Ø		250V DC	
	Std	Max	Std	Max	Std	Max	Std	Max	Std	Max
DTFC322	3	0	7½	15	—	—	—	—	10	—
DTFC362	3	10	7½	15	15	30	15	50	10	—
DTNFC222	—	10	—	20	—	—	—	—	—	10
DTNFC322	—	10	—	20	—	—	—	—	—	10
DTNFC362	—	10	—	20	—	50	—	60	—	10

Accessories

Catalog Number	Description
HA161234	Auxiliary Switch (1-NO & 1 NC) ③
HA261234	Auxiliary Switch (2-NO & 2 NC) ③
HA361234	Low Voltage Auxiliary Switch ③
HG61234	Equipment Ground Lug Kit (two lugs provided)
HG261234	Isolated Equipment Ground Lug Kit
HP62	Fuse Puller (3 per kit, (2) kits required per switch)
HNC263	Neutral Kit
HR612	240 Volt Class R Fuse Clip Kit (3 fuse clips per kit, (2) kits required per switch)
HR62	600 Volt Class R Fuse Clip Kit (3 fuse clips per kit, (2) kits required per switch)
HLC612	Copper Lug Kit (9 lugs per kit) ⑤
HCL623	Compression Lug Neutral Barrier Kit

Replacement Parts

Catalog Number	Description
HFB22	Fusible 240 Volt Line Side Replacement Base (2) kits required per switch
HBB22	Fusible 240 Volt Load Side Replacement Base (2) kits required per switch
HFB62	Fusible 600 Volt Line Side Replacement Base (2) kits required per switch
HBB62	Fusible 600 Volt Load Side Replacement Base (2) kits required per switch
HNB623	Non-fusible Replacement Line Base (2) kits required per switch
HHD61234	Replacement Handle/Handle Guard
HL612	Replacement Lugs (3 lugs per kit)
HM6123	Replacement Mechanism (2) kits required per switch
④	Replacement Door

① Fusible switches accept: Class H fuses as standard or Class R fuses with kit. Catalog number DTF362 also accepts Class J fuses (move load base).

② Dual horse ratings

Std - applies when non-time delay fuses are installed.

Max - applies when time-delay fuses are installed.

③ (2) required per switch (one for each of the two line bases).

④ Catalog number is same as switch catalog number plus "DOOR" suffix.

⑤ Lugs are aluminum alloy as standard. Optional copper body lugs are available.

Standards and Ratings

- **CSA#1079316**
- Meets CSA C22.2 NO.4-04 for switches
- Suitable for use as Transfer Equipment on optional standby systems as defined by Article 702 of the NEC
- Meets NEMA Standard KS-1 for enclosed switches (Type HD)
- Meets NEC wire bending space requirements
- Suitable for use as Service Equipment
- Rated 10,000 AIC with Class H or 200,000 AIC when used with or protected by Class R or J fuses (fuse ampere rating must not exceed switch ampere rating)

Features

- Quick-make and break switching action
- Visible blade, double break construction
- Highly visible ON/OFF indication
- Modular design allows quick and easy replacement of parts
- Front removable lugs which can easily be converted to copper body or compression type lugs
- Defeatable dual cover interlock
- All copper current carrying parts ⑤
- Tangential knockouts
- Handle is padlockable in OFF position

Mechanical Lug Wire Ranges (60/75°C, Cu/Al)

Description	Wire Range
Line, Load	#12-2 AWG
Neutral	
Ground	#14-4 AWG

SIEMENS

Product Specification Sheet #HD60.13 (page 2)

Compression Lugs (UL listed for field installation) ①

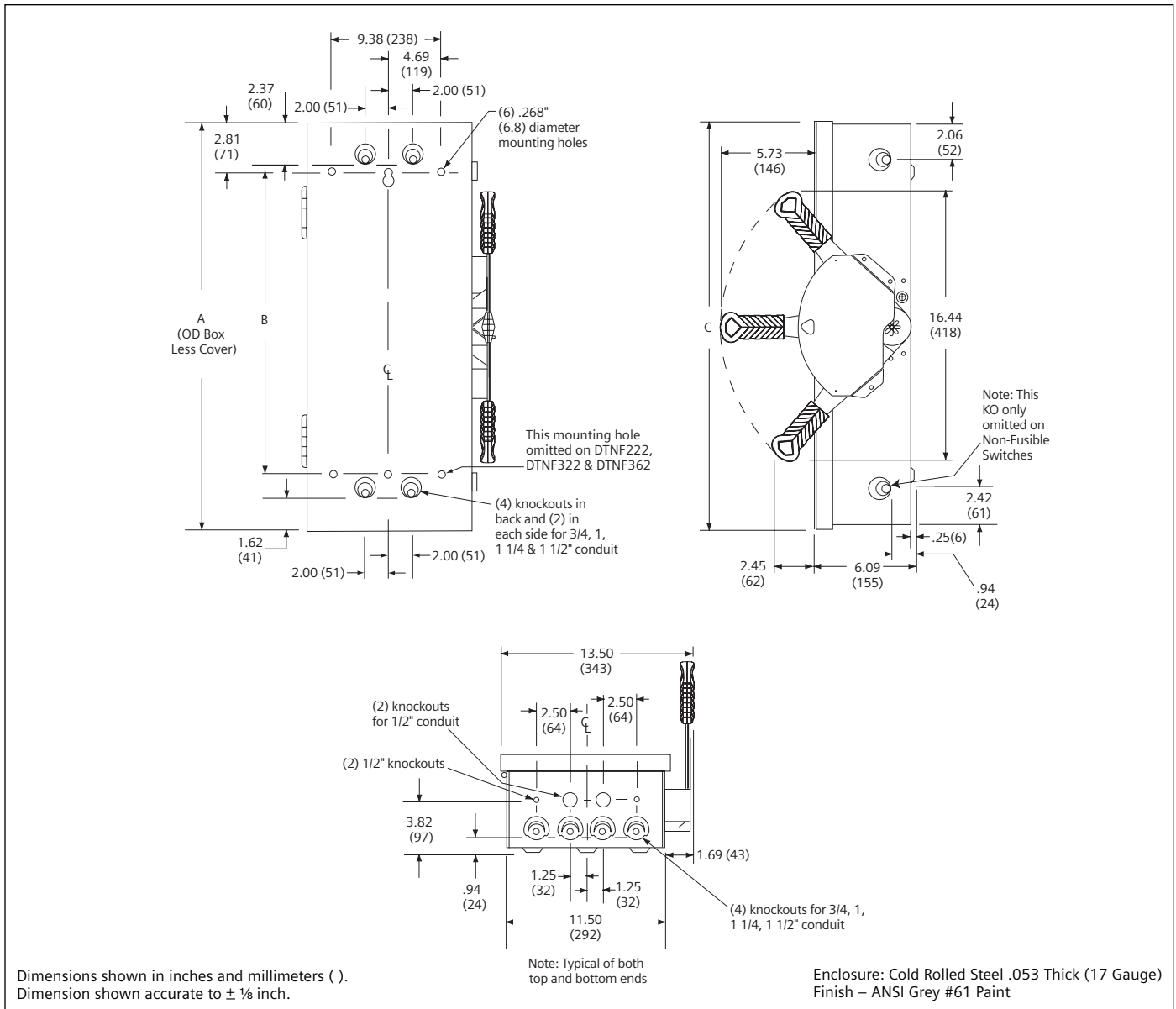
Wire Size	Burndy		Thomas-Betts		IlSCO	
	CU ONLY	CU/AL	CU ONLY	CU/AL	CU ONLY	CU/AL
#14-10			256-30695-1352	60097		
#8	YA8C-L1 BOX YA8C-TC14	YA8CA3	54130 54930BE	60102 61102		ACL-8
#6	YA6C-L BOX YA6C	YA6CA1	54105 54905BE	60107 61107	CRB-6 CRB-6L	ACL-6
#4			54106	61112	CRB-4	

Dimensions and Wire Bending Space

Catalog Number	Dimensions			Wire Bending Space	
	A	B	C	Top	Bottom
DTNFC222 DTNFC322 DTNFC362	24.87 (632)	19.00 (483)	25.51 (648)	4.90	4.90
DTFC322 DTFC362	33.45 (852)	27.50 (699)	34.19 (868)	4.90	7.40 4.90

① If compression lugs are used for the neutral, order compression lug neutral barrier kit HCL612.

Dimension Drawing



Siemens Canada Ltd.
Automation & Drives
1550 Appleby Line
Burlington, Ontario L7L 6X7

©Siemens Canada Ltd.
Siemens is a registered trademark of Siemens AG
Specifications are subject to change without notice.

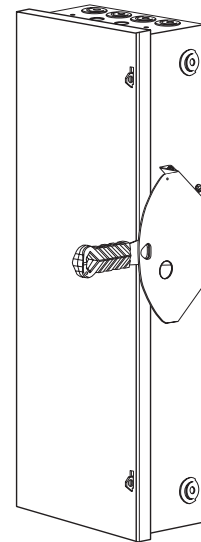
www.siemens.ca

Product Specification Sheet #HD100.9.1

Heavy Duty Double Throw Safety Switches

Type VBII

100 Amp, Type 1 (Indoor) Enclosure



General Information

Catalog Number	Max AC Volts	Description	Shipping Weight (lbs.)
DTFC323 ①	240	Fusible, 3 Pole, 3 Wire	45
DTFC363 ①	600	Fusible, 3 Pole, 3 Wire	45
DTNFC223	240	Non-fusible, 2 Pole, 2 Wire	36
DTNFC323	240	Non-fusible, 3 Pole, 3 Wire	37
DTNFC363	600	Non-fusible, 3 Pole, 3 Wire	37

Horsepower Ratings ②

Catalog Number	240V 1Ø		240V 3Ø		480V 3Ø		600V 3Ø		250V DC	
	Std	Max	Std	Max	Std	Max	Std	Max	Std	Max
DTFC323	7½	15	15	30	—	—	—	—	20	—
DTFC363	7½	15	15	30	25	60	30	75	20	—
DTNFC223	—	15	—	40	—	—	—	—	—	20
DTNFC323	—	15	—	40	—	—	—	—	—	20
DTNFC363	—	15	—	40	—	75	—	100	—	20

Accessories

Catalog Number	Description
HA161234	Auxiliary Switch (1-NO & 1 NC) ③
HA261234	Auxiliary Switch (2-NO & 2 NC) ③
HA361234	Low Voltage Auxiliary Switch ③
HG61234	Equipment Ground Lug Kit (two lugs provided)
HG261234	Isolated Equipment Ground Lug Kit
HP63	Fuse Puller (3 per kit, (2) kits required per switch)
HNC263	Neutral Kit
HR63	Class R Fuse Clip Kit (3 fuse clips per kit, (2) kits required per switch)
HT23	240V Class T Fuse Clip Kit (2) required per pole
HT63	600V Class T Fuse Clip Kit (2) required per pole
HLC63	Copper Lug Kit (9 lugs per kit) ⑤
HCL63	Compression Lug Neutral Barrier Kit

Replacement Parts

Catalog Number	Description
HBB63	Fusible Load Side Replacement Base (2) kits required per switch
HFB63	Fusible Line Side Replacement Base (2) kits required per switch
HNB623	Non-fusible Replacement Line Base (2) kits required per switch
HHD61234	Replacement Handle/Handle Guard
HL63	Replacement Lugs (3 lugs per kit)
HM6123	Replacement Mechanism (2) kits required per switch
④	Replacement Door

Mechanical Lug Wire Ranges (60/75°C, Cu/Al)

Description	Wire Range
Line, Load	#14-1/0 AWG
Neutral	
Ground	#14-4 AWG

① Fusible switches accept: Class H fuses as standard or Class R or T fuses with kit, Class J fuses (move load base).

② Dual horse ratings

Std - applies when non-time delay fuses are installed.

Max - applies when time-delay fuses are installed.

③ (2) required per switch (one for each of the two line bases).

④ Catalog number is same as switch catalog number plus "DOOR" suffix.

⑤ Lugs are aluminum alloy as standard. Optional copper body lugs are available.

Standards and Ratings

- **CSA#1079316**
- Meets CSA C22.2 NO.4-0 for switches
- Suitable for use as Transfer Equipment on optional standby systems as defined by Article 702 of the NEC
- Meets NEMA Standard KS-1 for enclosed switches (Type HD)
- Meets NEC wire bending space requirements
- Suitable for use as Service Equipment
- AIC Ratings

Heavy Duty

10,000 AIC with Class H or 200,000 AIC when used with or protected by Class R, J or T fuses (fuse ampere rating must not exceed switch ampere rating)

Features

- Quick-make and break switching action
- Visible blade, double break construction
- Highly visible ON/OFF indication
- Modular design allows quick and easy replacement of parts
- Front removable lugs which can easily be converted to copper body or compression type lugs
- Defeatable dual cover interlock
- All copper current carrying parts ⑤
- Tangential knockouts
- Handle is padlockable in OFF position

SIEMENS

Product Specification Sheet #HD100.9 (page 2)

Compression Lugs (UL listed for field installation) ①

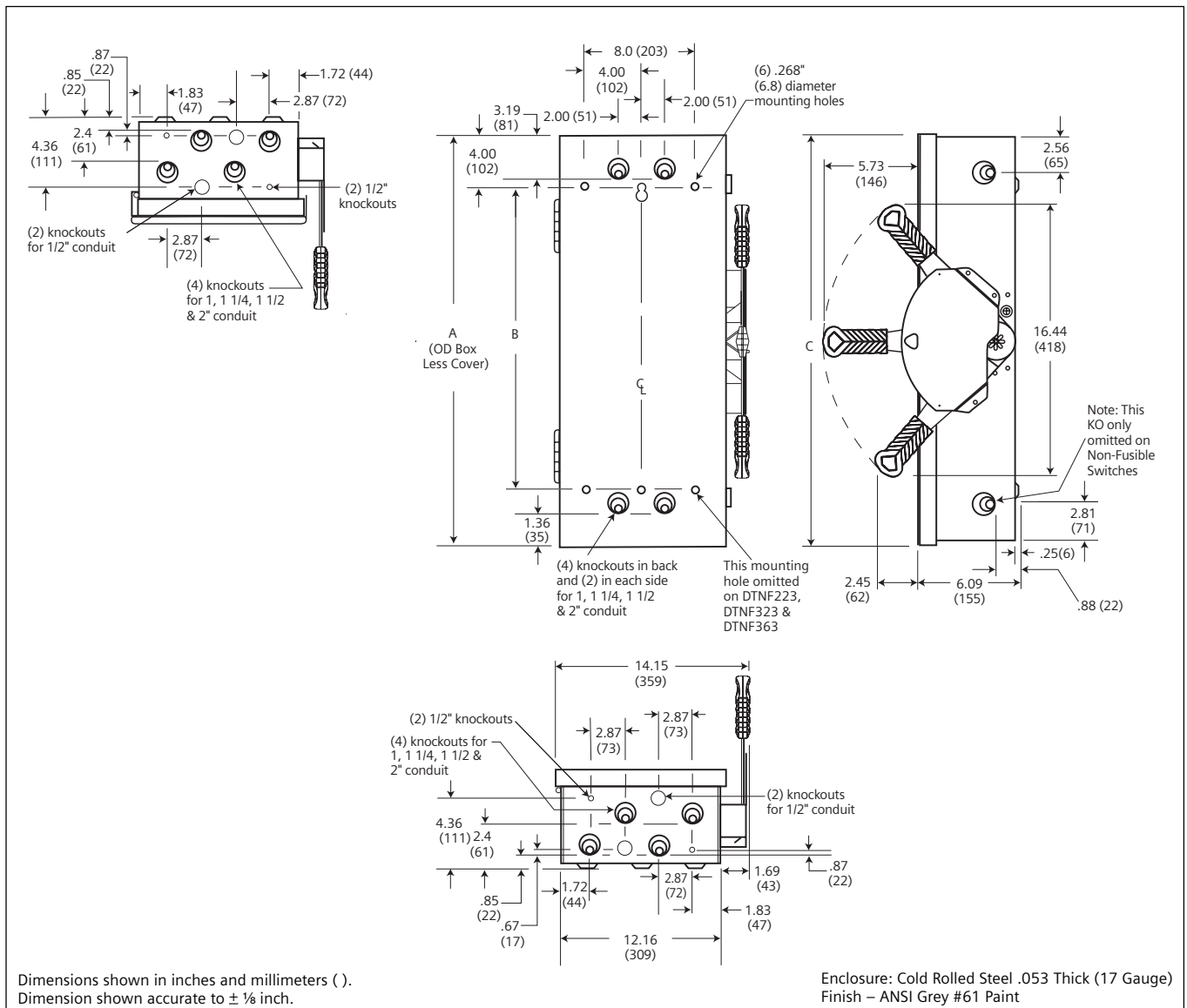
Wire Size	Burndy		Thomas-Betts		IlSCO	
	CU ONLY	CU/AL	CU ONLY	CU/AL	CU ONLY	CU/AL
#6	YA6C-L Box	YA6CA1	54105	61107	CRB-6	ACL-6
	YA6C		54905BE	60107	CRB-6L	
#4	YA4C-L BOX	YA4CA1	54106	61112	CRB-4	ACL-4
	YA4C		54906BE	60112	CRB-4L	
#2	YA2C-L2 BOX	YA2CA5	54107	61116	CRB-2	ACL-2
	YA2C				CRB-2L	
#1	YA1C-L2		54108	61122	CRB-1-14	
	YA1C		54947BE		CRA-1L	
1/0				61130		

Dimensions and Wire Bending Space

Catalog Number	Dimensions			Wire Bending Space	
	A	B	C	Top	Bottom
DTNFC223	27.60 (701)	19.36 (492)	28.09 (713)	6.12	6.12
DTNFC323					
DTNFC363					
DTFC323	36.41 (925)	28.11 (714)	36.96 (939)	6.12	8.12
DTFC363					

① If compression lugs are used for the neutral, order compression lug neutral barrier kit HCL63.

Dimension Drawing



Siemens Canada Ltd.
Automation & Drives
1550 Appleby Line
Burlington, Ontario L7X 6X7

www.siemens.ca

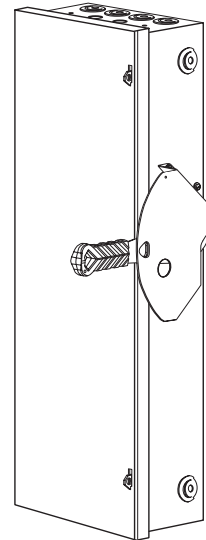
©Siemens Canada Ltd.
Siemens is a registered trademark of Siemens AG
Specifications are subject to change without notice.

Product Specification Sheet #HD200.7.1

Heavy Duty Double Throw Safety Switches

Type VBII

200 Amp, Type 1 (Indoor)



General Information

Catalog Number	Max AC Volts	Description	Shipping Weight (lbs.)
DTFC324 ①	240	Fusible, 3 Pole, 3 Wire	92
DTFC364 ①	600	Fusible, 3 Pole, 3 Wire	92
DTNFC224	240	Non-fusible, 2 Pole, 2 Wire	79
DTNFC324	240	Non-fusible, 3 Pole, 3 Wire	82
DTNFC364	600	Non-fusible, 3 Pole, 3 Wire	82

Horsepower Ratings ②

Catalog Number	240V 1Ø		240V 3Ø		480V 3Ø		600V 3Ø		250V DC	
	Std	Max	Std	Max	Std	Max	Std	Max	Std	Max
DTFC324	5	—	25	60	—	—	—	—	40	—
DTFC364	15	—	25	60	50	125	60	150	40	—
DTNFC224	—	15	—	60	—	—	—	—	—	40
DTNFC324	—	15	—	60	—	—	—	—	—	40
DTNFC364	—	15	—	60	—	125	—	150	—	40

Accessories

Catalog Number	Description
HA161234	Auxiliary Switch (1-NO & 1 NC) ③
HA261234	Auxiliary Switch (2-NO & 2 NC) ③
HA361234	Low Voltage Auxiliary Switch ③
HG61234	Equipment Ground Lug Kit (two lugs provided)
HG261234	Isolated Equipment Ground Lug Kit
HNC264	Neutral Kit
HR64	Class R Fuse Clip Kit (3 fuse clips per kit, (2) kits required per switch)
HT24 ④	300V Class T Kit (2) required per pole
HT64 ④	600V Class T Kit (2) required per pole
HLC64	Copper Lug Kit (9 lugs per kit) ⑤
HCL64	Compression Lug Neutral Barrier Kit

Replacement Parts

Catalog Number	Description
HBB64	Fusible Load Side Replacement Base (2) kits required per switch
HBB21	Fusible Line Side Replacement Base (2) kits required per switch
HNB64	Non-fusible Replacement Line Base (2) kits required per switch
HH61234	Replacement Handle/Handle Guard
HL64	Replacement Lugs (3 lugs per kit)
HM64	Replacement Mechanism ④
⑤	Replacement Door

Mechanical Lug Wire Ranges (60/75°C, Cu/Al)

Description	Wire Range
Line, Load Neutral	#6-250 Kcmil
Ground	#14-4 AWG

① Fusible switches accept: Class H fuses as standard or Class R or T fuses with kit, Class J fuses (move load base).

② Dual horse ratings

Std - applies when non-time delay fuses are installed.

Max - applies when time-delay fuses are installed.

③ (2) required per switch (one for each of the two line bases).

④ (4) required for 2 pole and (6) required for a 3 pole switch.

⑤ Catalog number is same as switch catalog number plus "DOOR" suffix.

⑥ Lugs are aluminum alloy as standard. Optional copper body lugs are available.

Standards and Ratings

- CSA#1079316
- Meets CSA C22.2 NO.4-04 for switches
- Suitable for use as Transfer Equipment on optional standby systems as defined by Article 702 of the NEC
- Meets NEMA Standard KS-1 for enclosed switches (Type HD)
- Meets NEC wire bending space requirements
- Suitable for use as Service Equipment
- AIC Ratings

Heavy Duty

10,000 AIC with Class H or 200,000 AIC when used with or protected by Class R, J or T fuses (fuse ampere rating must not exceed switch ampere rating)

Features

- Quick-make and break switching action
- Visible blade, double break construction
- Highly visible ON/OFF indication
- Modular design allows quick and easy replacement of parts
- Front removable lugs which can easily be converted to copper body or compression type lugs
- Defeatable dual cover interlock
- All copper current carrying parts ⑥
- Tangential knockouts
- Handle is padlockable in OFF position

SIEMENS

Product Specification Sheet #HD200.7 (page 2)

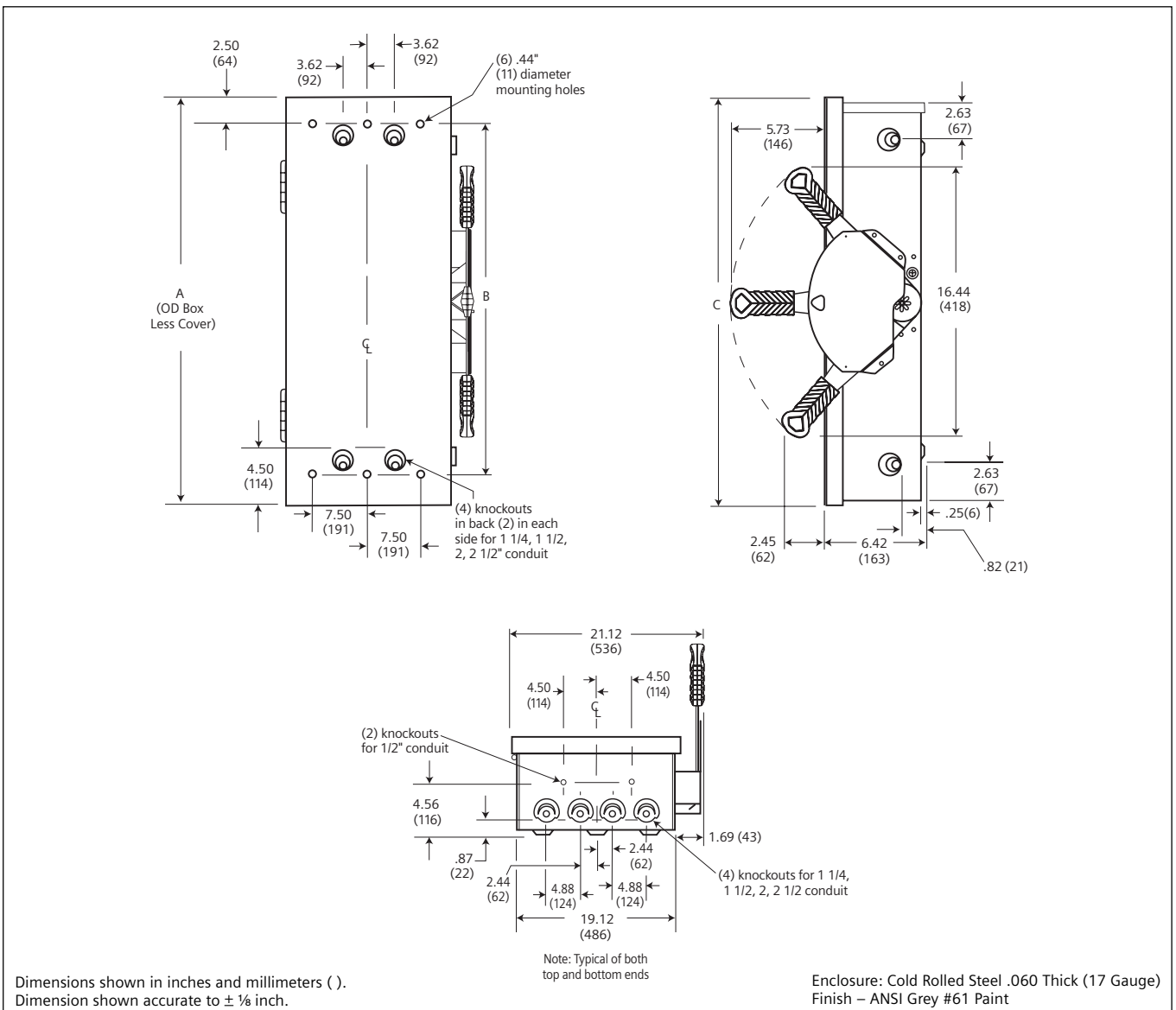
Compression Lugs (UL listed for field installation)

Dimensions and Wire Bending Space

Wire Size	Burndy		Thomas-Betts		IlSCO	
	CU ONLY	CU/AL	CU ONLY	CU/AL	CU ONLY	CU/AL
#2	YA2C-L Box YA2C	YA2CA1	54142-TB	60117	CRB-2 CRB-2L	IACL-2 ACN-2
#1	YA1C-L BOX YA1C	YA1CA1	54147 54947BE	60123	CRA-1-38 CRA-1L	ACN-1
1/0	YA25-L BOX YA25	YA25A1	54153-TB 54949BE	60129 61130	CRA-0 CRA-1/0L	IACL-1/0 ACN-1/0
2/0	YA26-L3 YA26	YA26A6	54158 256-30695-1229 54910BE	60135 61136	CRA-2/0 CRA-2/0L	ACL-2/0 IACL-2/0
3/0	YA27-L3 YA27	YA27A1	54163-TB	60141 61142	CRC-3/0 CRB-3/0L	IACL-3/0 ACL-3/0
4/0	YA28-L3 YA28-TC38	YA28A1	54168 256-30695-1253	61148 60147	CRC-4/0 CRB-4/0L	IACL-4/0 ACL-4/0
250 Kcmil	YA29-L7		54173 54913BE	61156	CRA-250	

Catalog Number	Dimensions			Wire Bending Space	
	A	B	C	Top	Bottom
DTNFC224 DTNFC324 DTNFC364	36.00 (914)	31.00 (787)	36.65 (931)	7.50	7.50
DTFC324 DTFC364	49.48 (1257)	44.50 (1130)	50.12 (1273)	7.50	10.00 10.00 7.50

Dimension Drawing



Siemens Canada Ltd.
Automation & Drives
1550 Appleby Line
Burlington, Ontario L7L 6X7

www.siemens.ca

©Siemens Canada Ltd.
Siemens is a registered trademark of Siemens AG
Specifications are subject to change without notice.

Product Specification Sheet #HD400.12.1

Heavy Double Throw Safety Switches

Type VBII

400 & 600 Amp, Type 1 (Indoor)

General Information

Number	Rating	AC Volts	Description	Weight (lbs)
DTNCF225 ①	400	240	Non-fusible, 2 Pole, 2 Wire	268
DTNFC325	400	240	Non-fusible, 3 Pole, 3 Wire	277
DTNFC326	600	240	Non-fusible, 3 Pole, 3 Wire	285
DTNFC365	400	600	Non-fusible, 3 Pole, 3 Wire	277
DTNFC366	600	600	Non-fusible, 3 Pole, 3 Wire	285

Note: All switches are also rated 250V DC max. Fusible switches accept Class J fuses as standard and Class T fuses by re-locating load bases.

Horsepower Ratings ②

Catalog Number	Std		Max		Std		Max		DC
	Std	Max	Std	Max	Std	Max	Std	Max	
DTNFC225	—	50	—	125	—	—	—	—	50
DTNFC325	—	50	—	125	—	—	—	—	50
DTNFC326	—	50	—	200	—	—	—	—	50
DTNFC365	—	50	—	125	—	250	—	350	50
DTNFC366	—	50	—	200	—	400	—	500	50

Accessories

Catalog Number	Description
HA165678	Auxiliary Switch (1-NO & 1 NC)
HA265678	Auxiliary Switch (2-NO & 2 NC)
HG656	Equipment Ground Lug Kit
HG2656	Isolated Equipment Ground Lug Kit
HNC678	Neutral Kit
HLC65678	Copper Lug Kit (1 lug per kit)
HCL65	Compression Lug Mounting Kit (2 kits/pole required, allows for (1) lug/Ø)

Replacement Parts

Catalog Number	Description
HFB65 ③④	Fusible Line Side Replacement Base 400A
HFB66 ③④	Fusible Line Side Replacement Base 600A
HBB656 ③④	Fusible Load Side Replacement Base 400 and 600A
HNB65 ③④	Non-fusible, Line Side Replacement Base 400A
HNB66 ③④	Non-fusible, Line Side Replacement Base 600A
HHD656	Replacement Handle/Handle Guard
HL65678 ④	Replacement Lugs (1 lug per kit)

① This switch is UL Listed for application on grounded B phase systems.

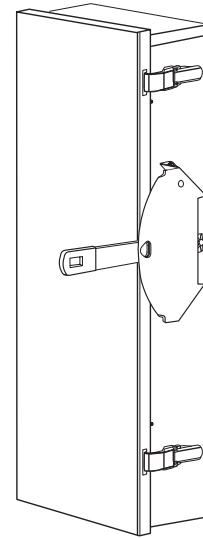
② Dual horsepower ratings:

Std - applies when non-time delay fuses are installed.

Max - applies when time-delay fuses are installed.

③ (2) required per pole.

④ Lugs are not provided on Line and Load Replacement Base Assemblies. Order Lug Kits.



Standards and Ratings

- CSA#1079316
- Meets CSA C22.2 NO.4-04 for switches
- Meets NEMA Standard KS-1 for enclosed switches
- Meets NEC wire bending space requirements
- Rated 10,000 AIC with Class H or 200,000 AIC when used with or protected by Class R, J or T fuses
- Suitable for use as Transfer Equipment on optional standby systems as defined by Article 702 of the NEC
- Suitable for use as Service Entrance Equipment

Features

- Quick-make and break switching action
- Visible blade design
- Highly visible ON/OFF indication
- Modular design allows quick and easy replacement of parts
- Front removable lugs which can easily be converted to copper body or compression type lugs
- Handle is padlockable in the OFF position

Mechanical Lug Wire Ranges (60/75°C, Cu/Al)

Description	Wire Range
Line, Load 400A	1/0 AWG - 750 Kcmil or (2) 1/0 AWG - 250 Kcmil
Line, Load 600A	(2) 1/0 AWG - 500 Kcmil or (3) 1/0 - 250 Kcmil
Standard and 200% Ground	(2) #6 AWG - 250 Kcmil
Neutral	(2) 1/0 AWG - 500 Kcmil

SIEMENS

Product Specification Sheet #HD400.12 (page 2)

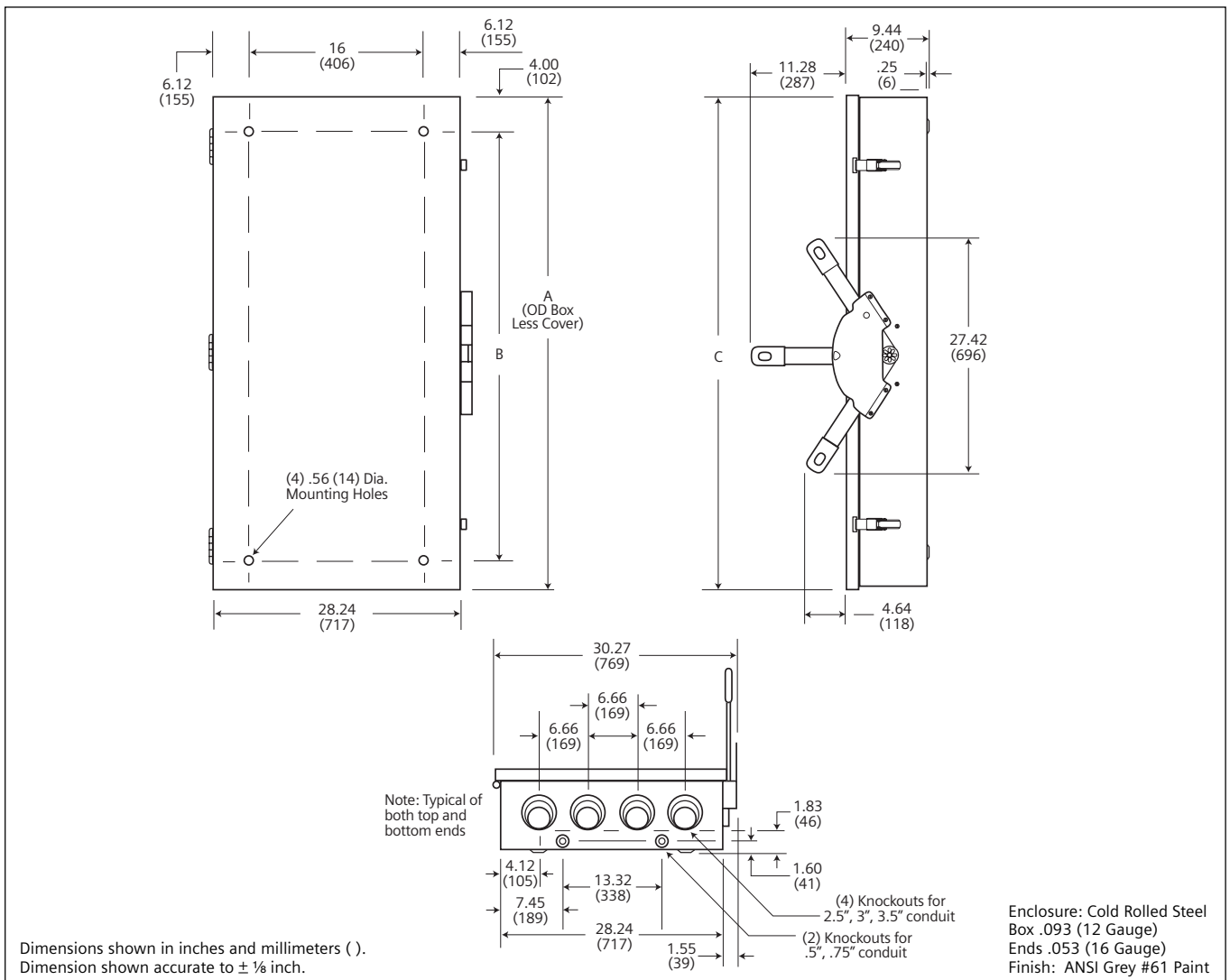
Compression Lugs ①

Wire Size	Burndy		Thomas-Betts		IlSCO	
	CU ONLY	CU/AL	CU ONLY	CU/AL	CU ONLY	CU/AL
2/0	YA26-N	YA26-A1	54160 54951BE			IACL-2/0 ACN-2/0
3/0	YA27-L Box YA27	YA27-A3	54165-TB 54965BE		CRB-3/0 CRB-3/0L	IACN-3/0 ACN-3/0
4/0	YA28-L Box YA28	YA28-A3	54170 54970BE	60150	CRB-4/0 CRB-4/0L	IACL-4/0 ACN-4/0
250 Kcmil	YA29-L Box YA29	YA29-A1	54113 54913BE	61156 60156	CRA-250 CRA-250L	IACL-250 ACL-250
300 Kcmil	YA30-L YA30	YA30-A1	54114 54914BE	61162 60162	CRA-300 CRA-300L	IACL-300 ACL-300
350 Kcmil	YA31-L YA31	YA31-A1	54915BE	61165 60165	CRA-350 CRA-350L	IACL-350 ACL-350
400 Kcmil	YA32-N		54116 54916BE			
500 Kcmil	YA34-L6 YA34-N			61171		IACL-500

Dimensions and Wire Bending Space

Catalog Number	Dimensions			Wire Bending Space	
	A	B	C	Top	Bottom
DTNFC225 DTNFC325 DTNFC326 DTNFC365 DTNFC366	57.71 (1466)	49.75 (1264)	58.46 (1485)	14.00 (356)	14.00 (356)

Dimension Drawing



① If compression lugs are used, order compression lug mounting kit HCL65678.

Siemens Canada Ltd.
Automation & Drives
1550 Appleby Line
Burlington, Ontario L7L 6X7

www.siemens.ca

©Siemens Canada Ltd.
Siemens is a registered trademark of Siemens AG
Specifications are subject to change without notice.