

# Product Specification Sheet #HD30.14.1

## Heavy Duty Double Throw Safety Switches

### Type VBII

### 30 Amp, Type 3R (Outdoor)

#### General Information

Catalog Number	Max AC Volts	Description	Shipping Weight (lbs.)
DTFC321R ①	240	Fusible, 3 Pole, 3 Wire	39
DTNFC361R	600	Non-fusible, 3 Pole, 3 Wire	35

#### Horsepower Ratings ②

Catalog Number	240V 1Ø		240V 3Ø		480V 3Ø		600V 3Ø		250V DC	
	Std	Max	Std	Max	Std	Max	Std	Max	Std	Max
DTFC321R	1½	3	3	7½	—	—	—	—	5	—
DTNFC361R	—	5	—	10	—	20	—	30	5	—

#### Accessories

Catalog Number	Description
HA161234	Auxiliary Switch (1-NO & 1 NC) ③
HA261234	Auxiliary Switch (2-NO & 2 NC) ③
HA361234	Low Voltage Auxiliary Switch ③
HG61234	Equipment Ground Lug Kit (two lugs provided)
HG261234	Isolated Equipment Ground Lug Kit
HP61	Fuse Puller (3 per kit, (2) kits required per switch)
HNC612	Neutral Kit
HR21	240 Volt Class R Fuse Clip Kit (3 fuse clips per kit, (2) kits required per switch)
HLC612	Copper Lug Kit (9 lugs per kit) ③
HCL612	Compression Lug Neutral Barrier Kit
HS075	0.75" Type "HS" Outdoor Hub
HS100	1.00" Type "HS" Outdoor Hub

#### Replacement Parts

Catalog Number	Description
HFB21	Fusible 240 Volt Line Side Replacement Base (2) kits required per switch
HBB21	Fusible 240 Volt Load Side Replacement Base (2) kits required per switch
HFB612	Fusible 600 Volt Line Side Replacement Base (2) kits required per switch
HBB612	Fusible 600 Volt Load Side Replacement Base (2) kits required per switch
HNB612	Non-fusible Replacement Line Base (2) Kits required per switch
HH61234	Replacement Handle/Handle Guard
HL612	Replacement Lugs (3 lugs per kit)
HM6123	Replacement Mechanism (2) kits required per switch
④	Replacement Door

① Catalog number DTFC321R accepts Class H fuses as standard and Class R fuses with kit HR21.

② Dual horse ratings

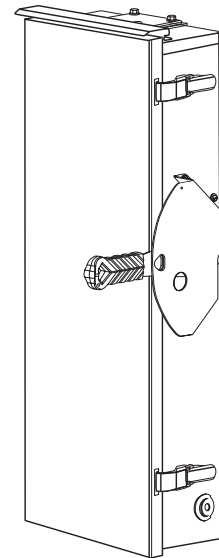
Std - applies when non-time delay fuses are installed.

Max - applies when time-delay fuses are installed.

③ (2) required per switch (one for each of the two line bases).

④ Catalog number is same as switch catalog number plus "DOOR" suffix.

⑤ Lugs are aluminum alloy as standard. Optional copper body lugs are available.



#### Standards and Ratings

- **CSA#1079316**
- Meets CSA C22.2 NO.4-04 for switches
- Suitable for use as Transfer Equipment on optional standby systems as defined by Article 702 of the NEC
- Meets NEMA Standard KS-1 for enclosed switches (Type HD)
- Meets NEC wire bending space requirements
- Suitable for use as Service Equipment
- Rated 10,000 AIC with Class H or 200,000 AIC when used with Class R or J fuses (fuse ampere rating must not exceed switch ampere rating)

#### Features

- Quick-make and break switching action
- Visible blade, double break construction
- Highly visible ON/OFF indication
- Modular design allows quick and easy replacement of parts
- Front removable lugs which can easily be converted to copper body or compression type lugs
- Defeatable dual cover interlock
- All copper current carrying parts ⑤
- Tangential knockouts
- Handle is padlockable in OFF position

#### Mechanical Lug Wire Ranges (60/75°C, Cu/Al)

Description	Wire Range
Line, Load Neutral	#12-6 AWG (Al) or #14-6 AWG (Cu)
Ground	#14-4 AWG

# SIEMENS

# Product Specification Sheet #HD30.14 (page 2)

Compression Lugs (UL listed for field installation) ①

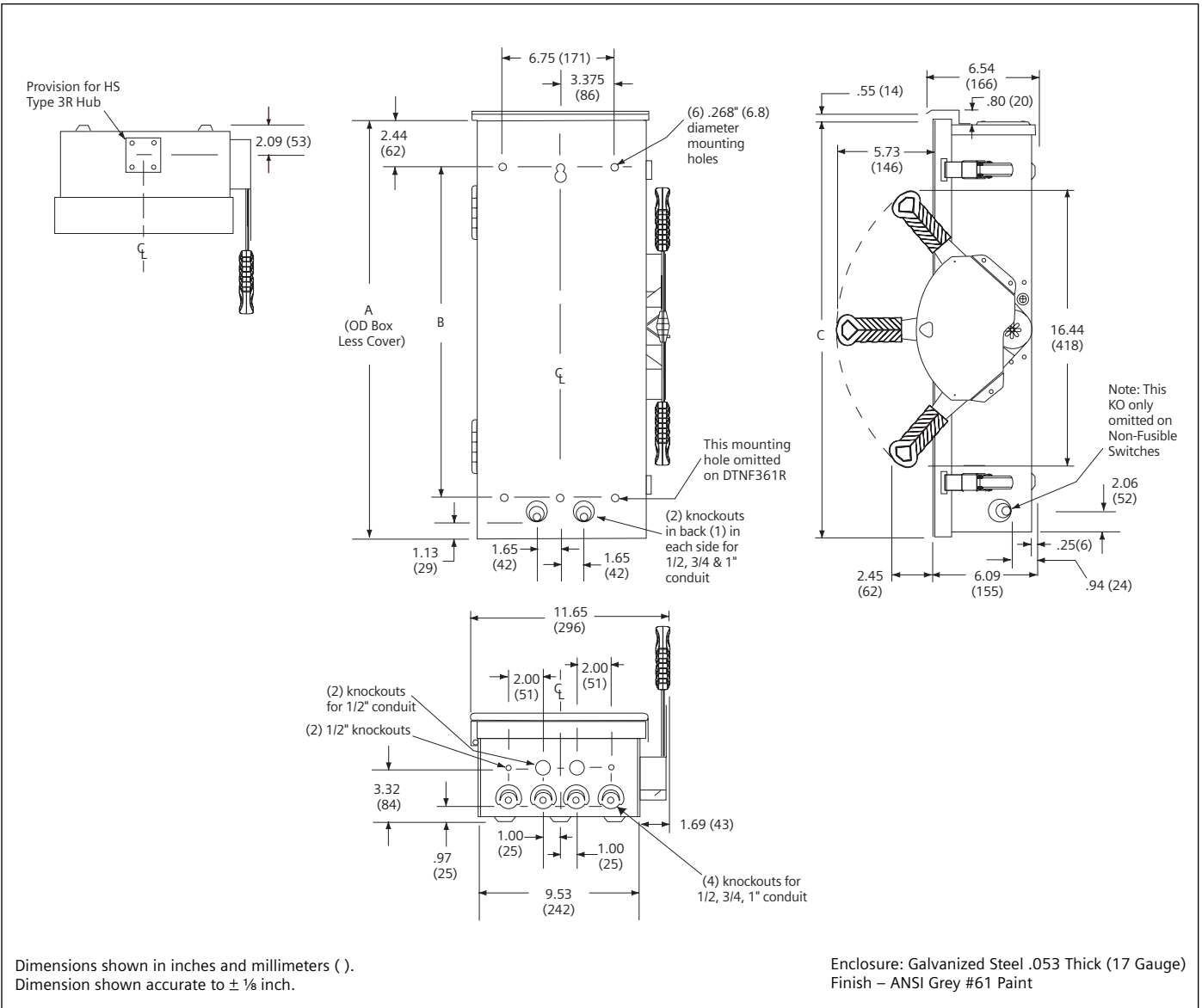
Dimensions and Wire Bending Space

Wire Size	Burndy		Thomas-Betts		IlSCO	
	CU ONLY	CU/AL	CU ONLY	CU/AL	CU ONLY	CU/AL
#14-10				60096 60097		
#8	YA8C-L BOX YA8C-L1 BOX		54104 54130	60101 60102 61102	CRA-8	ACL-8 ACN-8
#6				61107		

Catalog Number	Dimensions			Wire Bending Space	
	A	B	C	Top	Bottom
DTFC321R	29.14 (740)	23.50 (597)	29.63 (753)	4.75	7.50
DTNFC361R	24.50 (622)	19.00 (483)	24.98 (634)	4.75	4.75

① If compression lugs are used for the neutral, order compression lug neutral barrier kit HCL612.

## Dimension Drawing



Siemens Canada Ltd.  
Automation & Drives  
1550 Appleby Line  
Burlington, Ontario L7L 6X7

vw

www.siemens.ca

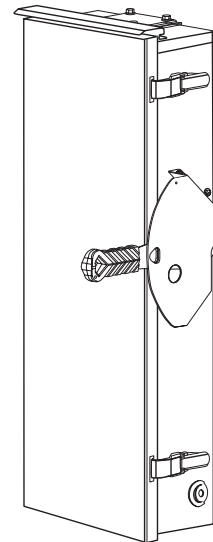
©Siemens Canada Ltd.  
Siemens is a registered trademark of Siemens AG  
Specifications are subject to change without notice.

# Product Specification Sheet #HD60.14.1

## Heavy Duty Double Throw Safety Switches

### Type VBII

### 60 Amp, Type 3R (Outdoor) Enclosure



#### General Information

Catalog Number	Max AC Volts	Description	Shipping Weight (lbs.)
DTNFC362R	600	Non-fusible, 3 Pole, 3 Wire	37

#### Horsepower Ratings <sup>②</sup>

Catalog Number	240V 1Ø		240V 3Ø		480V 3Ø		600V 3Ø		250V DC	
	Std	Max	Std	Max	Std	Max	Std	Max	Std	Max
DTNFC362R	—	10	—	20	—	50	—	60	—	10

#### Accessories

Catalog Number	Description
HA161234	Auxiliary Switch (1-NO & 1 NC) <sup>③</sup>
HA261234	Auxiliary Switch (2-NO & 2 NC) <sup>③</sup>
HA361234	Low Voltage Auxiliary Switch <sup>③</sup>
HG61234	Equipment Ground Lug Kit (two lugs provided)
HG261234	Isolated Equipment Ground Lug Kit
HP62	Fuse Puller (3 per kit, (2) kits required per switch)
HNC263	Neutral Kit
HR612	240 Volt Class R Fuse Clip Kit (3 fuse clips per kit, <sup>③</sup> (2) kits required per switch)
HLC612	Copper Lug Kit (9 lugs per kit) <sup>③</sup>
HCL623	Compression Lug Neutral Barrier Kit
HS075	0.75" Type "HS" Outdoor Hub
HS100	1.00" Type "HS" Outdoor Hub

#### Replacement Parts

Catalog Number	Description
HFB22	Fusible 240 Volt Line Side Replacement Base (2) kits required per switch
HBB22	Fusible 240 Volt Load Side Replacement Base (2) kits required per switch
HNB623	Non-fusible Replacement Line Base (2) kits required per switch
HHD61234	Replacement Handle/Handle Guard
HL612	Replacement Lugs (3 lugs per kit)
HM6123	Replacement Mechanism (2) kits required per switch
<sup>④</sup>	Replacement Door

#### Mechanical Lug Wire Ranges (60/75°C, Cu/Al)

Description	Wire Range
Line, Load Neutral	#12-2 AWG (Al)
Ground	#14-4 AWG

<sup>①</sup> DTF322R accepts Class H fuses as standard and Class R fuses with kit.

<sup>②</sup> Dual horse ratings

Std - applies when non-time delay fuses are installed.

Max - applies when time-delay fuses are installed.

<sup>③</sup> (2) required per switch (one for each of the two line bases).

<sup>④</sup> Catalog number is same as switch catalog number plus "DOOR" suffix.

<sup>⑤</sup> Lugs are aluminum alloy as standard. Optional copper body lugs are available.

#### Standards and Ratings

- CSA#1079316
- Meets CSA C22.2 NO.4-04 for switches
- Suitable for use as Transfer Equipment on optional standby systems as defined by Article 702 of the NEC
- Meets NEMA Standard KS-1 for enclosed switches (Type HD)
- Meets NEC wire bending space requirements
- Suitable for use as Service Equipment
- Rated 10,000 AIC with Class H or 200,000 AIC when used with or protected by Class R or J fuses (fuse ampere rating must not exceed switch ampere rating)

#### Features

- Quick-make and break switching action
- Visible blade, double break construction
- Highly visible ON/OFF indication
- Modular design allows quick and easy replacement of parts
- Front removable lugs which can easily be converted to copper body or compression type lugs
- Defeatable dual cover interlock
- All copper current carrying parts <sup>⑤</sup>
- Tangential knockouts
- Handle is padlockable in OFF position

**SIEMENS**

# Product Specification Sheet #HD60.14 (page 2)

Compression Lugs (UL listed for field installation) ①

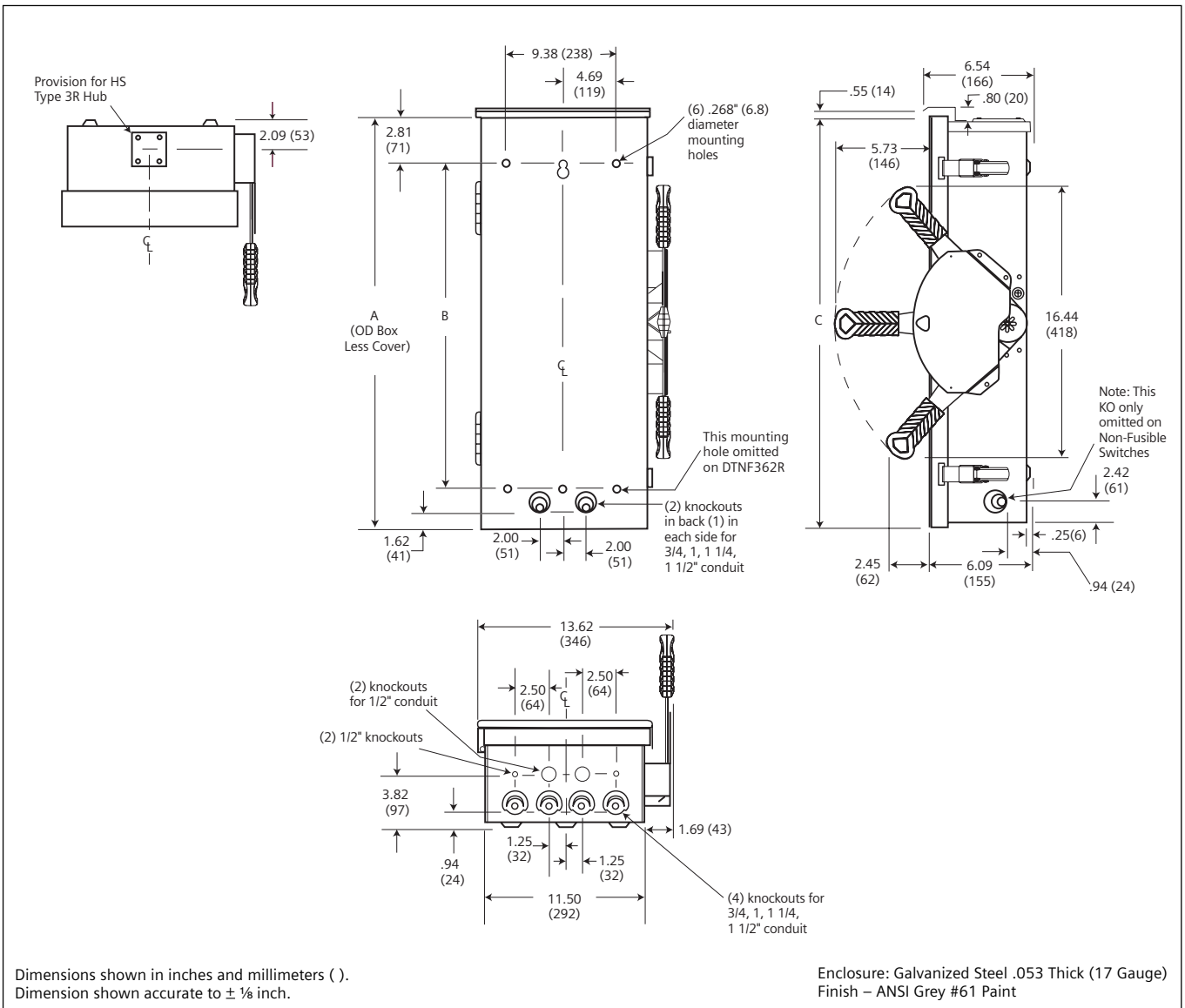
Wire Size	Burndy		Thomas-Betts		IlSCO	
	CU ONLY	CU/AL	CU ONLY	CU/AL	CU ONLY	CU/AL
#14-10			256-30695-1352	60097		
#8	YA8C-L1 BOX YA8C-TC14	YA8CA3	54130 54930BE	60102 61102		ACL-8
#6	YA6C-L BOX YA6C	YA6CA1	54105 54905BE	60107 61107	CRB-6 CRB-6L	ACL-6
#4			54106	61112	CRB-4	

Dimensions and Wire Bending Space

Catalog Number	Dimensions			Wire Bending Space	
	A	B	C	Top	Bottom
DTNFC362R	24.87 (632)	19.00 (483)	25.51 (648)	4.90	4.90
DTFC322R	33.55 (852)	27.50 (699)	34.19 (868)	4.90	7.40

① If compression lugs are used for the neutral, order compression lug neutral barrier kit HCL612.

## Dimension Drawing



Siemens Canada Ltd.  
Automation & Drives  
1550 Appleby Line  
Burlington, Ontario L7L 6X7

[www.siemens.ca](http://www.siemens.ca)

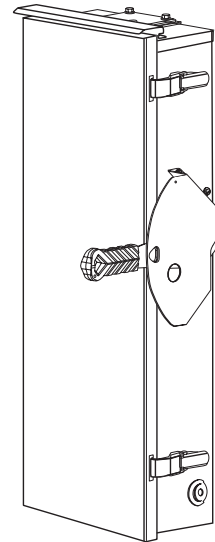
©Siemens Canada Ltd.  
Siemens is a registered trademark of Siemens AG  
Specifications are subject to change without notice.

# Product Specification Sheet #HD100.10.1

## Heavy Duty Double Throw Safety Switches

### Type VBII

### 100 Amp, Type 3R (Outdoor) Enclosure



#### General Information

Catalog Number	Max AC Volts	Description	Shipping Weight (lbs.)
<b>Heavy Duty</b>			
DTNFC323R	240	Non-fusible, 3 Pole, 3 Wire	38
DTNFC363R	600	Non-fusible, 3 Pole, 3 Wire	38

#### Horsepower Ratings ②

Catalog Number	240V 1Ø		240V 3Ø		480V 3Ø		600V 3Ø		250V DC	
	Std	Max	Std	Max	Std	Max	Std	Max	Std	Max
<b>Heavy Duty</b>										
DTNFC323R	—	5	—	40	—	75	—	100	—	20
DTNFC363R	—	15	—	40	—	75	—	100	—	20

#### Accessories

Catalog Number	Description
<b>Heavy Duty Double Throw Switches</b>	
HG61234	Equipment Ground Lug Kit
HNC263	Neutral Kit
HG261234	Isolated Equipment Ground Kit
HS125	1.25" Type "HS" Outdoor Hub
HS150	1.50" Type "HS" Outdoor Hub
<b>Heavy Duty Double Throw Switches</b>	
HA161234	Auxiliary Switch (1-NO & 1 NC) ③
HA261234	Auxiliary Switch (2-NO & 2 NC) ③
HA361234	Low Voltage Auxiliary Switch ③
HR63	Class R Fuse Clip Kit (3 fuse clips per kit, (2) kits required per switch)
HLC63	Copper Lug Kit (9 lugs per kit) ③
HCL63	Compression Lug Neutral Barrier Kit
HP63	Fuse Puller Kit (2) kits required per switch
HT23	240V Class T Fuse Clip Kit (2) required per switch
HT63	600V Class T Fuse Clip Kit (2) required per switch

#### Replacement Parts

Catalog Number	Description
HBB63	Fusible Load Side Replacement Base (2) kits required per switch
HFB63	Fusible Line Side Replacement Base (2) kits required per switch
HNB623	Non-fusible Replacement Line Base (2) kits required per switch
HH61234	Replacement Handle/Handle Guard
HL63	Replacement Lugs (3 lugs per kit)
HM6123	Replacement Mechanism (2) kits required per switch
④	Replacement Door

- ① Fusible switches accept: Class H fuses as standard or Class R or T fuses with kit, Class J fuses (move load base).
- ② Dual horse ratings  
Std - applies when non-time delay fuses are installed.  
Max - applies when time-delay fuses are installed.
- ③ (2) required per switch (one for each of the two line bases).
- ④ Catalog number is same as switch catalog number plus "DOOR" suffix.
- ⑤ Lugs are aluminum alloy as standard. Optional copper body lugs are available.

#### Standards and Ratings

- CSA#1079316
- Meets CSA C22.2 NO.4-04 UL98 for switches
- Suitable for use as Transfer Equipment on optional standby systems as defined by Article 702 of the NEC
- Meets NEMA Standard KS-1 for enclosed switches (Type HD)
- Meets NEC wire bending space requirements
- Suitable for use as Service Equipment
- AIC Ratings

#### Heavy Duty

10,000 AIC with Class H or 200,000 AIC when used with or protected by Class R, J or T fuses (fuse ampere rating must not exceed switch ampere rating)

#### Features

- Quick-make and break switching action
- Visible blade, double break construction
- Highly visible ON/OFF indication
- Modular design allows quick and easy replacement of parts
- Front removable lugs which can easily be converted to copper body or compression type lugs
- Defeatable dual cover interlock
- All copper current carrying parts ⑤
- Tangential knockouts
- Handle is padlockable in OFF position

#### Mechanical Lug Wire Ranges (75°C, Cu/Al)

Description	Wire Range
Line, Load Neutral	#14-1/0 AWG
Ground	#14-4 AWG

# SIEMENS

# Product Specification Sheet #HD100.10 (page 2)

## Compression Lugs (UL listed for field installation) ①

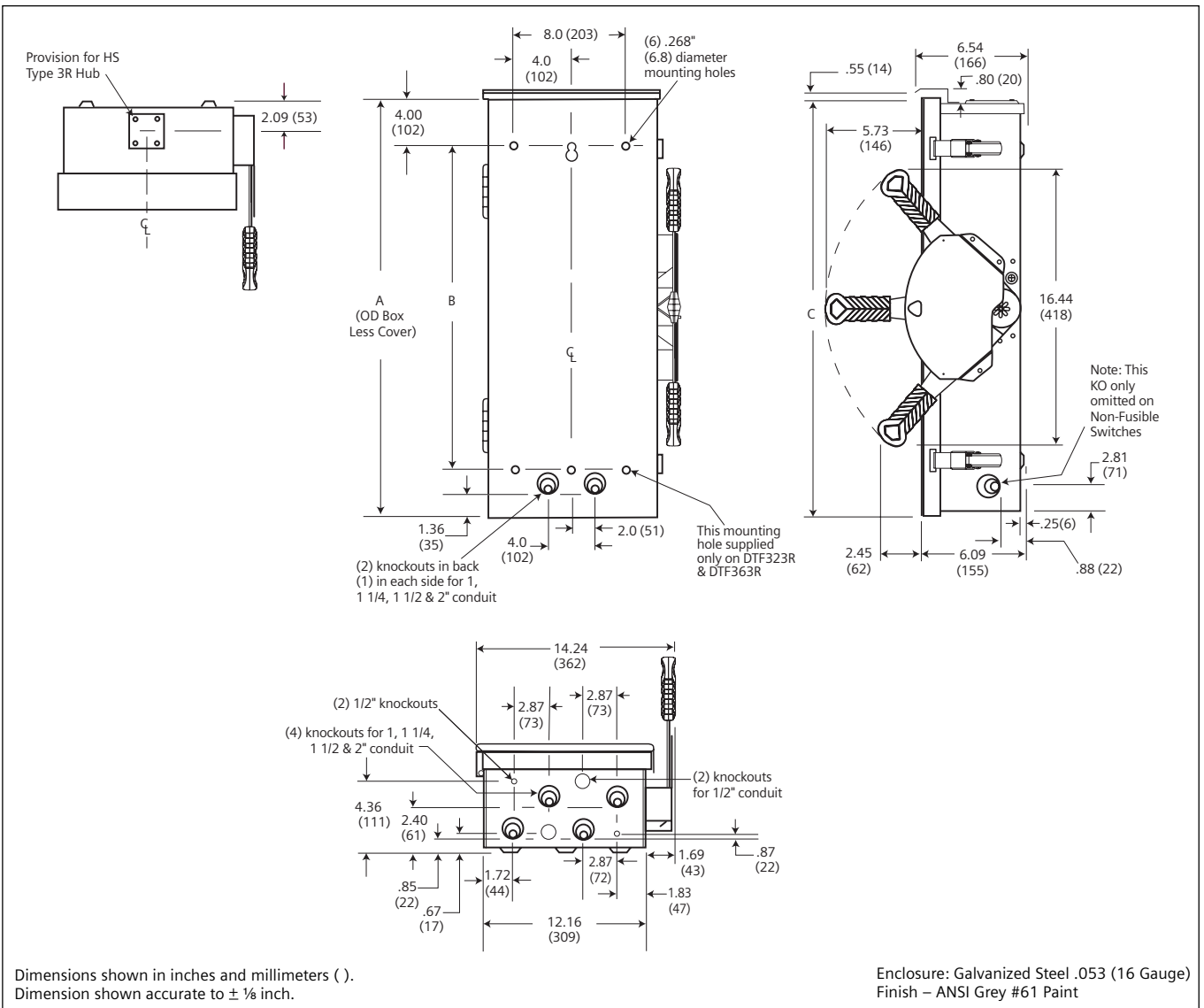
Wire Size	Burndy		Thomas-Betts		Ilisco	
	CU ONLY	CU/AL	CU ONLY	CU/AL	CU ONLY	CU/AL
#6	YA6C-L BOX YA6C	YA6CA1	54105 54905BE	61107 60107	CRB-6 CRB-6L	ACL-6
#4	YA4C-L BOX YA4C	YA4CA1	54106 54906BE	61112 60112	CRB-4 CRB-4L	ACL-4
#2	YA2C-L BOX YA2C	YA2CA1	54107	61116	CRB-2 CRB-2L	ACL-2
#1	YA1C-L2 YA1C		54108 54947BE	61122	CRB-1-14 CRA-1L	
1/0				61130		

### Dimensions

Catalog Number	Dimensions		
	A	B	C
DTNFC323R DTNFC323R DTNFC363R	(701)	(492)	(713)

① If compression lugs are used for the neutral, order compression lug neutral barrier kit HCL63.

## Dimension Drawing



NOTE: Top and bottom wire bending space is 6.12 inches for all catalog numbers except that DTF323R has 8.12 inches of bottom wire bending space.

Siemens Canada Ltd.  
Automation & Drives  
1550 Appleby Line  
Burlington, Ontario L7L 6X7

[www.siemens.ca](http://www.siemens.ca)

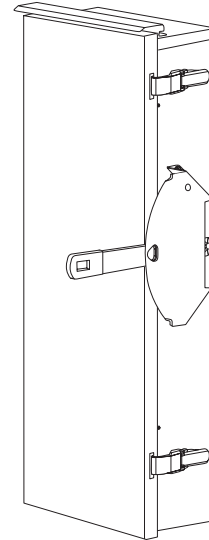
©Siemens Canada Ltd.  
Siemens is a registered trademark of Siemens AG  
Specifications are subject to change without notice.

# Product Specification Sheet #HD400.13.1

## Heavy Duty Double Throw Safety Switches

### Type VBII

### 400 and 600 Amp, Type 3R (Outdoor)



#### General Information

Catalog Number	Ampere Rating	Max AC Volts	Description	Shipping Weight (lbs)
DTNF365R	400	600	Non-fusible, 3 Pole, 3 Wire	280
DTNF366R	600	600	Non-fusible, 3 Pole, 3 Wire	287

Note: All switches are also rated 250V DC max.

#### Horsepower Ratings <sup>②</sup>

Catalog Number	240V 1 Ø	240V 3 Ø	480V 3 Ø	600V 3 Ø	250V DC
DTNF365R	50	125	250	350	50
DTNF366R	50	200	400	500	50

#### Accessories

Catalog Number	Description
HA165678	Auxiliary Switch (1-NO & 1 NC)
HA265678	Auxiliary Switch (2-NO & 2 NC)
HG656	Equipment Ground Lug Kit
HG2656	Isolated Equipment Ground Lug Kit
HNC678	Neutral Kit
HLC65678	Copper Lug Kit (1 lug per kit)
HCL65	Compression Lug Mounting Kit (2 kits/pole required, allows for (1) lug/Ø)

#### Replacement Parts

Catalog Number	Description
HNB65 <sup>③</sup> <sup>④</sup>	Non-fusible Line Side Replacement Base 400A
HNB66 <sup>③</sup> <sup>④</sup>	Non-fusible, Line Side Replacement Base 600A
HHD656	Replacement Handle/Handle Guard
HL65678 <sup>④</sup>	Replacement Lugs (1 lug per kit)

#### Mechanical Lug Wire Ranges (60/75°C, Cu/Al)

Description	Wire Range
Line, Load 400A	1/0 AWG - 750 Kcmil or (2) 1/0 AWG - 250 Kcmil
Line, Load 600A	(2) 1/0 AWG - 500 Kcmil or (3) 1/0 - 250 Kcmil
Standard and 200% Ground	(2) #6 AWG - 250 Kcmil
Neutral	(2) 1/0 AWG - 500 Kcmil

<sup>①</sup> This switch is UL Listed for application on grounded B phase systems.

<sup>②</sup> Dual horsepower ratings:

Std - applies when non-time delay fuses are installed.

Max - applies when time-delay fuses are installed.

<sup>③</sup> (2) required per pole.

<sup>④</sup> Lugs are not provided on Line and Load Replacement Base Assemblies.  
Order Lug Kits.

#### Standards and Ratings

- CSA#1079316
- Meets CSA C22.2 NO.4-04 for switches
- Meets NEMA Standard KS-1 for enclosed switches
- Meets NEC wire bending space requirements
- Rated 10,000 AIC when protected by Class H or 200,000 AIC when protected by Class R, J or T fuses
- Suitable for use as Transfer Equipment on optional standby systems as defined by Article 702 of the NEC
- Suitable for use as Service Entrance Equipment

#### Features

- Quick-make and break switching action
- Visible blade design
- Highly visible ON/OFF indication
- Modular design allows quick and easy replacement of parts
- Front removable lugs which can easily be converted to copper body or compression type lugs
- Handle is padlockable in the OFF position

# SIEMENS

# Product Specification Sheet #HD400.13 (page 2)

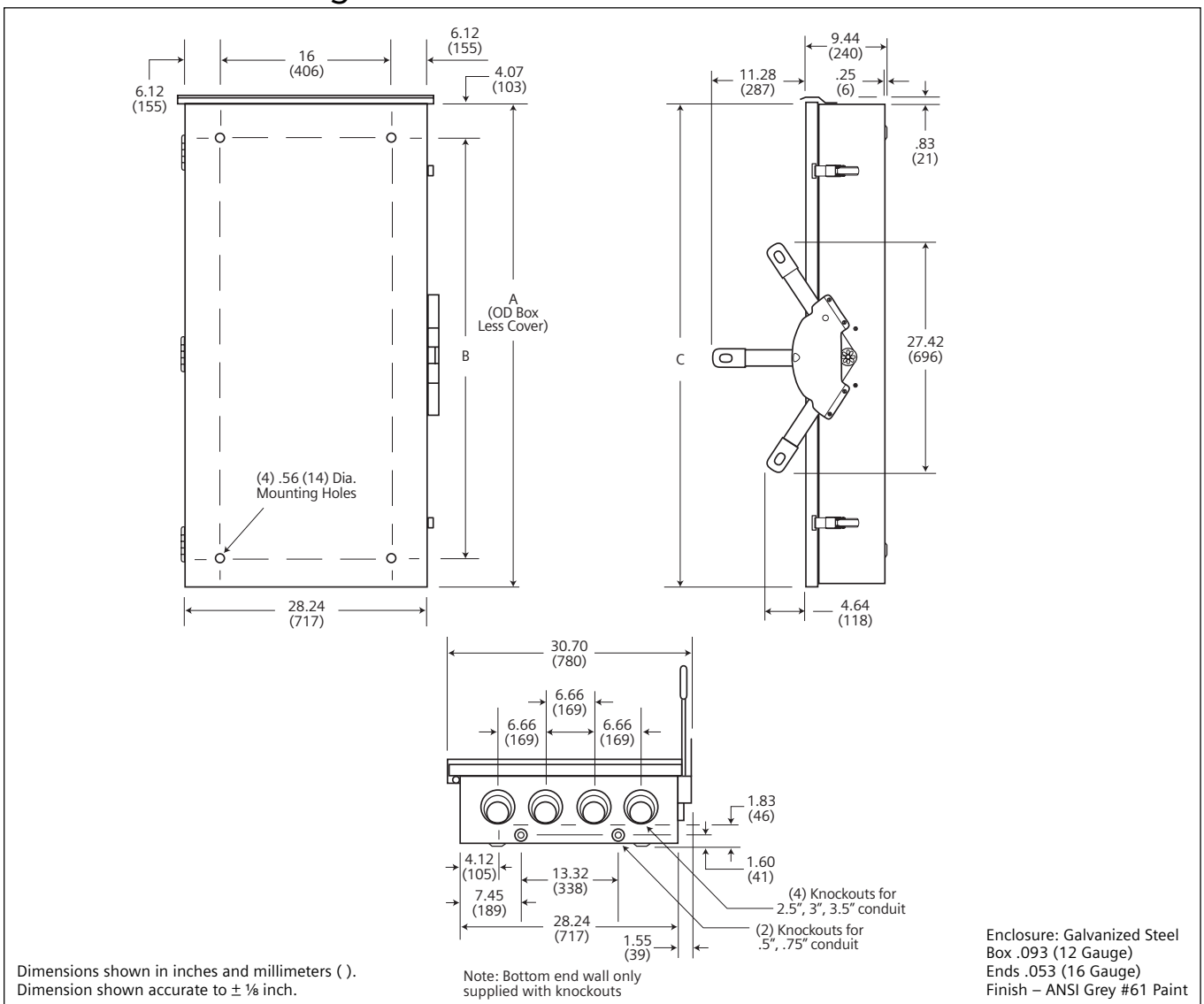
## Compression Lugs ①

Wire Size	Burndy		Thomas-Betts		IlSCO	
	CU ONLY	CU/AL	CU ONLY	CU/AL	CU ONLY	CU/AL
2/0	YA26-N YA2C	YA26-A1	54160 54951BE			IACL-2/0 ACN-2/0
3/0	YA27-L Box YA27	YA2-A3	54165-TB 54965BE			CRB-3/0 IACN-3/0 ACN-3/0
4/0	YA28-L Box YA28	YA28-A3	54170 54970BE	60150		CRB-4/0 IACL-4/0 ACN-4/0
250 Kcmil	YA29-L Box YA29	YA29-A1	54113 54913BE	61156 60156		CRA-250 IACL-250 ACL-250
300 Kcmil	YA30-L YA30	YA30-A1	54114 54914BE	61162 60162		CRA-300 IACL-300 ACL-300
350 Kcmil	YA31-L YA31	YA31-A1	54915BE	61165 60165		CRA-350 IACL-350 ACL-350
400 Kcmil	YA32-N		54116 54916BE			
500 Kcmil	YA34-L6 YA34-N			61171		IACL-500

## Dimensions and Wire Bending Space

Catalog Number	Dimensions			Wire Bending Space	
	A	B	C	Top	Bottom
DTNF365R DTNF366R	57.78 (1468)	49.75 (1264)	58.46 (1485)	14.00 (356)	14.00 (356)

## Dimension Drawing



① If compression lugs are used, order compression lug mounting kit HCL65678.

Siemens Canada Ltd.  
Automation & Drives  
1550 Appleby Line  
Burlington, Ontario L7L 6X7

[www.siemens.ca](http://www.siemens.ca)

©Siemens Canada Ltd.  
Siemens is a registered trademark of Siemens AG  
Specifications are subject to change without notice.