

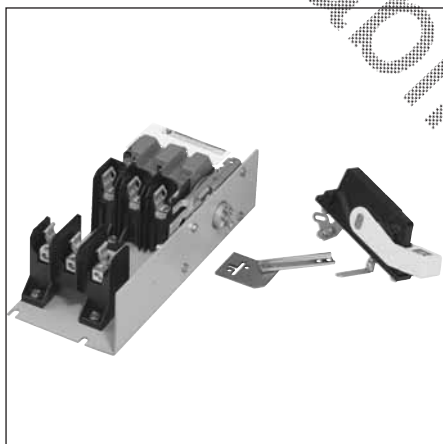
# Switches

## Disconnect Switches

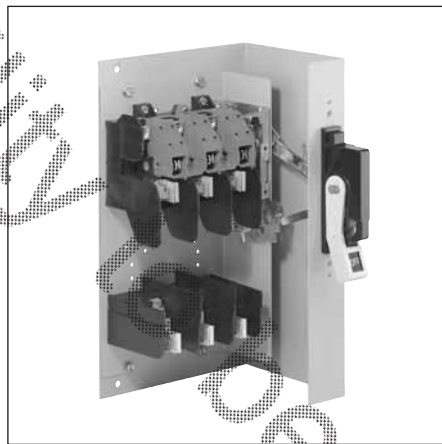
### Compact Non-Fusible — Rotary and Toggle

#### Features

- 30-600A, 600VAC and DC ratings
- UL Recognized (file# 12152 vol. 1 & 2) and CSA Certified
- Visible blade, quick make and break switching action
- Panel and Flange mounted assemblies facilitate installation
- Panel mounted switches are variable depth
- Short circuit rating of 10,000 AIC with class H fuse, and of 200,000 AIC with class R or J fuses
- Flange mounted handles are Type 1, 3R and 12 rated and padlockable in the off position with up to (3) padlocks with 5/16 hasps
- Meets UL98 requirements and suitable for both main and branch circuit applications
- A complete line of aux contacts are available
- Load break and horsepower rated
- Defeatable cover interlock standard with all handles



VBFS361, VBLK1 & VBH1



VBFS362F



VBNFS365, VBLK4 & VBH2

#### Ordering Information

1. Determine the ratings required (amps, volts, HP, Fusible, NF), the mounting needed (Panel or Flange), and select the appropriate switch.
2. For panel mounted switches with a rigid operating shaft (30-600A), order panel mounted switch flange mounted operating handle & rigid linkage kit based on depth required.
3. For panel mounted switches with a Max-Flex operator, order panel mounted switch, Max-Flex Handle & Adapter Kit and drive cable.
4. Select accessories if required.

# Switches Disconnect Switches

## Type VBII Switch, Handle and Linkage Kit Selection

### Switches

Switch Ampere Rating	Max. AC Voltage Rating	Catalog Number	Horsepower Rating, Switches and 3 Phase <sup>④</sup>						600 List (max) <sup>④</sup>	Price \$
			240 Volts AC		480 Volts AC		600 Volts AC Volts DC			
			Standard	Max.	Standard	Max.	Standard	Max.		
<b>Fusible Panel Mounted Variable Depth Switches - 3 Pole<sup>⑤ ⑦</sup></b>										
30	240	VBFS321	3	7 1/2	—	—	—	—	— <sup>①</sup>	
60	240	VBFS322	7 1/2	15	—	—	—	— <sup>②</sup>		
30	600	VBFS361	—	—	5	15	7 1/2	20	15 <sup>③</sup>	
60	600	VBFS362	—	—	15	30	15	50	30 <sup>③</sup>	
100	600	VBFS363	—	—	25	60	30	75	50 <sup>③</sup>	
200	600	VBFS364	—	—	50	125	60	150	50 <sup>③</sup>	
400	600	VBFS365	—	—	100	250	125	350	50 <sup>③</sup>	
600	600	VBFS366	—	—	150	400	200	500	50 <sup>③</sup>	
<b>Non-fusible Panel Mounted Variable Depth Switches - 3 Pole<sup>⑤</sup></b>										
30	600	VBNFS361	—	10	—	20	—	30	15 <sup>③</sup>	
60	600	VBNFS362	—	20	—	50	—	60	30 <sup>③</sup>	
100	600	VBNFS363	—	40	—	75	—	100	50 <sup>③</sup>	
200	600	VBNFS364	—	60	—	125	—	150	50 <sup>③</sup>	
400	600	VBNFS365	—	125	—	250	—	300	50 <sup>③</sup>	
600	600	VBNFS366	—	200	—	400	—	500	50 <sup>③</sup>	
<b>Fusible Flange Mounted Switches - 3 Pole<sup>⑤ ⑦</sup></b>										
30	240	VBFS321F	3	7 1/2	—	—	—	—	— <sup>①</sup>	
60	240	VBFS322F	7 1/2	15	—	—	—	—	— <sup>②</sup>	
30	600	VBFS361F	—	—	5	15	7 1/2	20	15 <sup>③</sup>	
60	600	VBFS362F	—	—	15	30	15	50	30 <sup>③</sup>	
100	600	VBFS363F	—	—	50	60	30	75	50 <sup>③</sup>	
200	600	VBFS364F	—	—	100	125	60	150	50 <sup>③</sup>	
<b>Non-fusible Flange Mounted Switches - 3 Pole<sup>⑤</sup></b>										
30	600	VBNFS361F	—	10	—	20	—	30	15 <sup>③</sup>	
60	600	VBNFS362F	—	20	—	50	—	60	30 <sup>③</sup>	
100	600	VBNFS363F	—	40	—	75	—	100	50 <sup>③</sup>	
200	600	VBNFS364F	—	60	—	125	—	150	50 <sup>③</sup>	

Note: Fusible switches include fuse provisions for Class H Fuses. The load base can be moved to pre-drilled holes for Class J Fuses. If Class R Fuses are required add a Class R Fuse Clip Kit.

### Flange Mounted Operating Handles

(Type 1, 3R and 12)

For use with Panel Mounted Switches. Included with Flange Mounted Switches as standard.

Catalog Number	Description	List Price \$
VBH1	30-200A Handle Assembly	
VBH2	400 & 600A Handle Assembly	

### Rigid Linkage Kits

For use with Panel Mounted Switches. Not required for Flange Mounted Switches.

Catalog Number	Switch Ampere Rating	Enclosure Depth <sup>⑦</sup>		List Price \$
		Min	Max.	
VBLK1	30-200	6.75	6.75	
VBLK2	30-200	6.75	19.0	
VBLK3	400 & 600	9.0	9.0	
VBLK4	400 & 600	9.0	19.0	

### Max-Flex™ Handle and Adapter Kit

(Type 1, 12 and 3R)

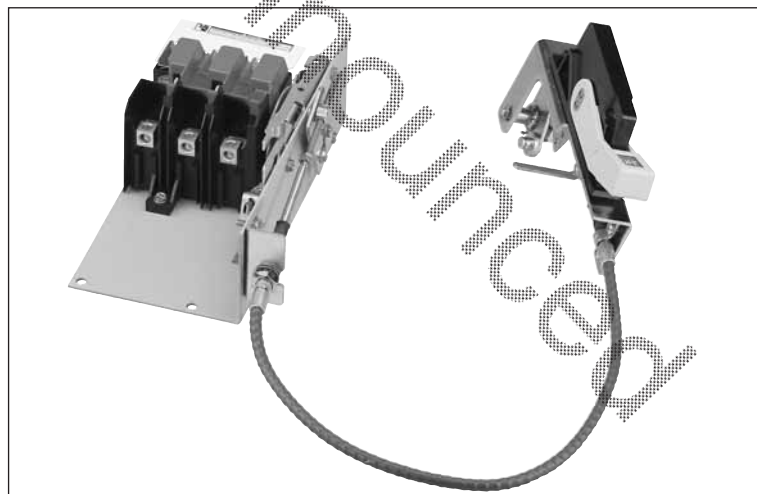
Use with 30-200A panel mounted switches and cable kit.

Catalog Number	Description	List Price \$
VBHM1	30-200A Max-Flex Adapter Kit	

### Cable Kit

For use with 30-200A panel mounted switches and Max-Flex handle and adapter kit.

Catalog Number	Description	List Price \$
FHOEC036	36" long dive cable	



VBNFS361, VBHM1 & FHOEC036

- ① Rated 5 HP at 250V DC.
- ② Rated 10 HP at 250V DC.
- ③ 600V DC & 600V DC horsepower rating shown requires (2) poles to be connected in series.
- ④ Std. - applies when non-time delay fuses are used.  
Max. - applies when time delay fuses are used.

- ⑤ Includes line base, load base, operating mechanism and line and load lugs. Order operating handle and linkage kits from tables on this page.
- ⑥ Includes line base, load base, operating mechanism line and load lugs operating handle and required linkage.
- ⑦ Dimensions (min. & max.) from enclosure mounting pan to outside surface of enclosure handle mounting flange.

# Switches

## Disconnect Switches

### Accessories Type VBII



HR612

#### Class R Fuse Clip Kits

These kits prevent the installation of Class H and K fuses (one kit required per switch).

#### Class R Fuse Clip Kits

Catalog Number	List Price \$	Description
HR21		30A, 240V Kit (HD only)
HR612		30A, 600V Kit/60A, 240V Kit
HR62		60A, 600V Kit
HR63		100A Kit
HR64		200A Kit
HR656		400A/600A Kit

#### Class J Fuse

All 30-600A, 600V fusible switches are field convertible to accept Class J fuses by moving the load base to a pre-drilled J fuse position.



HT63

#### Class T Fuse Adapter Kits

100-600A fusible switches are field convertible to accept Class T fuses. 400-600A switches are field convertible to accept Class T fuses by moving the load base to a pre-drilled T fuse position.

#### Class T Fuse Adapter Kits<sup>①</sup>

Catalog Number	List Price \$	Description
HT23		100A, 240V Kit
HT63		100A, 600V Kit
HT24		200A, 240V Kit
HT64▲		200A, 600V Kit

#### Neutral Kits

Standard Neutral Kits can be field installed in 30-100A switches.

#### Neutral Kits

Switch Ampere Rating	Kit Catalog Number	List Price \$
30A 600V, 60A 240V	HNC612	
60A, 600V & 100A	HNC623	



HN612

#### 200% Neutral Kits

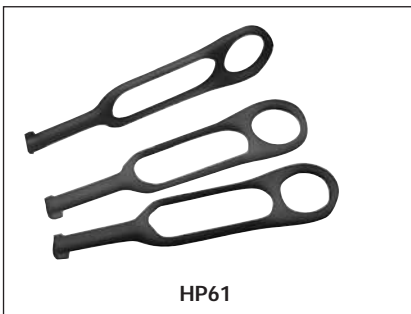
UL listed 200% Neutrals are available on 60 & 100A switches. They are typically used with non-linear transformers or where increased neutral ampacity/lug capacity is required.

#### 200% Neutral Kits

Switch Ampere Rating	Kit Catalog Number	List Price \$	Wire Range Line & Load Lugs (Cu/Al)
100	HNC263		(2) #14-1/0 AWG
200	HNC264		(2) #6 AWG-300 Kcmil

▲ Built to order. Allow 6-8 weeks for delivery.

① One kit per pole required.



### Auxiliary Contacts

The auxiliary contacts are available in 1 normally open and 1 normally closed or 2 normally open and 2 normally closed configurations. Siemens offers a PLC Auxiliary Switch (30-200A) that has very low resistance for low voltage and current typical in PLC circuits. All auxiliary contacts make after and break before main switch contacts.

Switch Ampere Rating	Aux. Switch Catalog Number	List Price \$	Kit Ampere Rating			Kit Horsepower Rating		
			125V AC Max.	250V AC Max.	28V DC Max.	125V AC Max.	250V AC Max.	28V DC Max.

#### With 1 NO & 1 NC Isolated Contacts

30-200	HA161234		10	10	—	1/2	3/4	—
400-600	HA165678		10	10	—	1/2	3/4	—

#### With 2 NO & 2 NC Isolated Contacts

30-200	HA261234		10	10	7	1/2	3/4	—
400-600	HA265678		10	10	7	1/2	3/4	—

#### Low Current PLC Type with 1 NO & 1 NC Gold Plated Contacts

30-200	HA361234		10	10	—	1/2	3/4	—
400-600	HA365678		10	10	—	1/2	3/4	—

### Fuse Puller Kits

Fuse Puller Kits are field installable in 30-100A Type VBII Heavy Duty Switches (one kit required per 3 pole switch).

Switch Ampere Rating	Fuse Puller Kit Catalog Number	List Price \$
30	HP61	
60	HP62▲	
100	HP63▲	

### Copper Lug Kits

All switches are UL approved to accept field installed copper lug kits.

Switch Ampere Rating	Copper Lug Catalog Number	List Price \$	Description
30-60	HLC612		(9) Lugs/Kit #14-4 AWG Cu
100	HLC63▲		(9) Lugs/Kit #14-1/0 AWG Cu
200	HLC64▲		(9) Lugs/Kit #6 AWG-300 Kcmil Cu
400-600A	HLC65678		(1) Lugs/Kit #1/0 AWG-600 Kcmil Cu

### Equipment Ground Kits

Equipment Ground Lug Kits are available for all switches.

Switch Ampere Rating	Catalog Number	List Price \$	Number of Terminals	Wire Range Per Terminal (Cu/Al)
30-200	HG61234		2	#14-4 AWG
400 & 600	HG656		4	#6 AWG-250 Kcmil

▲ Built to order. Allow 6-8 weeks for delivery.

# Switches

## Disconnect Switches

### Type VBII Lug Wire Ranges & Dimensions

#### Lugs

30 & 60A switches are suitable for use with 60° or 75°C wire. 100–600A switches are suitable for use with 75°C rated wire.

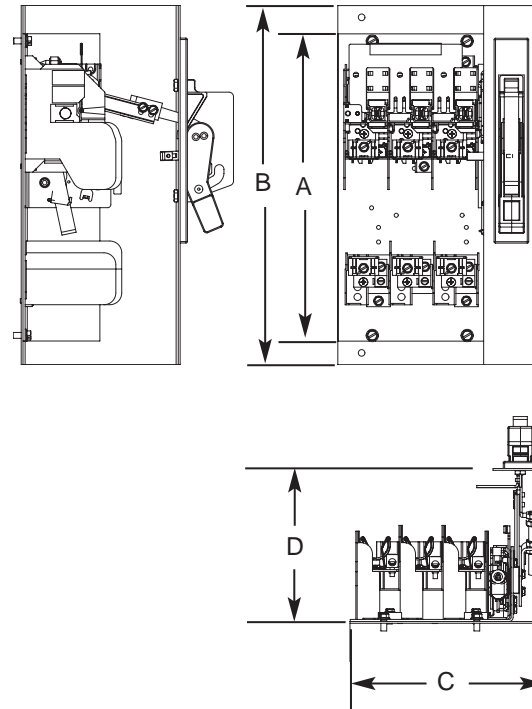
#### Wire Ranges (Line, Load and Standard Neutral)

Switch Ampere Rating	UL Approved Wire Range	Lug Wire Range
30	#14-6 AWG (Cu/Al)	#14-2 AWG (Cu/Al)
60	#14-2 AWG (Cu/Al)	#14-2 AWG (Cu/Al)
100	#14-1/0 AWG (Cu/Al)	#14-1/0 AWG (Cu/Al)
200	#6 AWG-300 Kcmil (Cu/Al)	#6 AWG-300 Kcmil (Cu/Al)
400	1/0 AWG-750 Kcmil (Cu/Al) or (2) 1/0 AWG-250 Kcmil (Cu/Al)	(1) 1/0 AWG-750 Kcmil (Cu/Al) or (2) 1/0 AWG-250 Kcmil (Cu/Al)
600	(2) 1/0 AWG-750 Kcmil (Cu/Al) or (4) 1/0 -250 Kcmil (Cu/Al)	(2) 1/0 AWG-750 Kcmil (Cu/Al) or (4) 1/0 AWG-250 Kcmil (Cu/Al)

#### Approximate Dimensions

Mounting bracket shown with handle installed is supplied with Flange Mounted Switches only. All Panel Mounted Switches have a "L" shaped mounting pan with a line base, load base (if fusible) and mechanism installed.

Catalog Number	Dimensions				
	A	B	C <sup>①</sup>	D (min)	D (max)
<b>Fusible, Panel Mounted</b>					
VBFS321	11.88	N/A	6.63	6.75	19
VBFS322	13.06	N/A	8.38	6.75	19
VBFS361	11.88	N/A	6.63	6.75	19
VBFS362	13.06	N/A	8.38	6.75	19
VBFS363	13.06	N/A	8.38	6.75	19
VBFS364	17	N/A	12.13	6.94	19
VBFS365	26.12	N/A	16.44	9	19
VBFS366	26.12	N/A <td 16.44	9	19	
<b>Non-fusible, Panel Mounted</b>					
VBNFS361	9.75	N/A	6.63	6.75	19
VBNFS362	9.75	N/A	8.38	6.75	19
VBNFS363	9.75	N/A	8.38	6.75	19
VBNFS364	10.75	N/A	12.13	6.94	19
VBNFS365	13	N/A	16.44	9	19
VBNFS366	13	N/A	16.44	9	19
<b>Fusible, Flange Mounted</b>					
VBFS321F	11.88	13	6.69	6.75	N/A
VBFS322F	13.06	15.25	8.44	6.75	N/A
VBFS361F	11.88	13	6.69	6.75	N/A
VBFS362F	13.06	15.25	8.44	6.75	N/A
VBFS363F	13.06	15.25	8.44	6.75	N/A
VBFS364F	17	18.75	12.19	6.94	N/A
<b>Non-fusible, Flange Mounted</b>					
VBNFS361F	9.75	11.25	6.69	6.75	N/A
VBNFS362F	9.75	11.25	8.44	6.75	N/A
VBNFS363F	9.75	11.25	8.44	6.75	N/A
VBNFS364F	10.75	11.6	12.19	6.94	N/A



① Dimension C for panel mounted switches indicates the minimum width from the left hand edge of the switch mounting pan to the right hand inside surface of the enclosure.